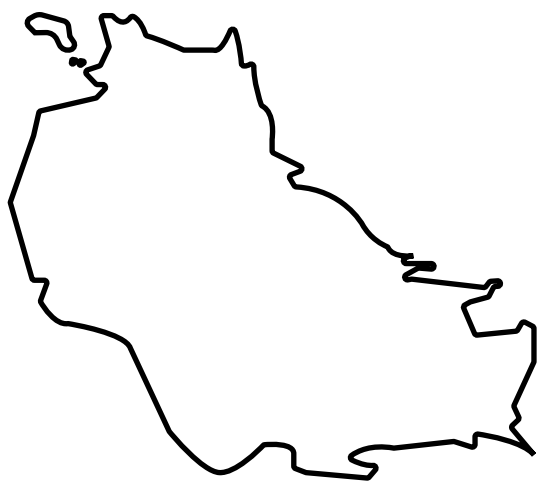
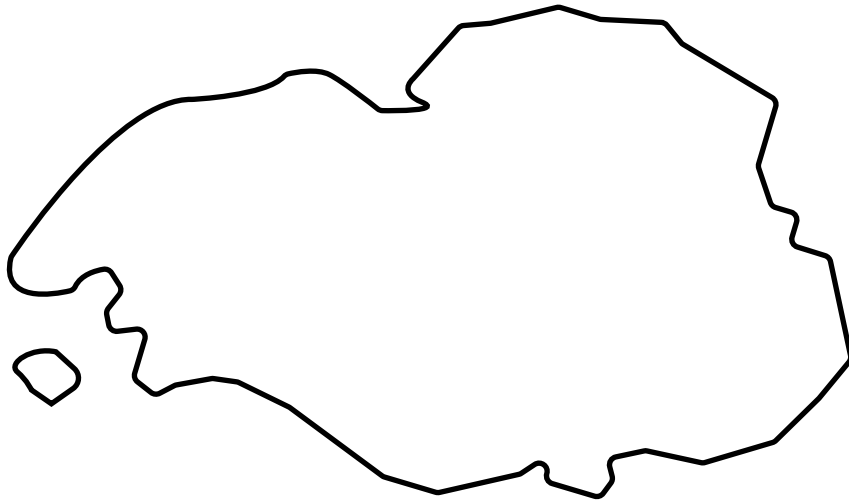


# LOOT NFT WORLD



*HABN Island*

*Vault Atoll*



*Isle of Fund*

*Royaume de  
Satoshi*

*Kingdom of  
X by SL*

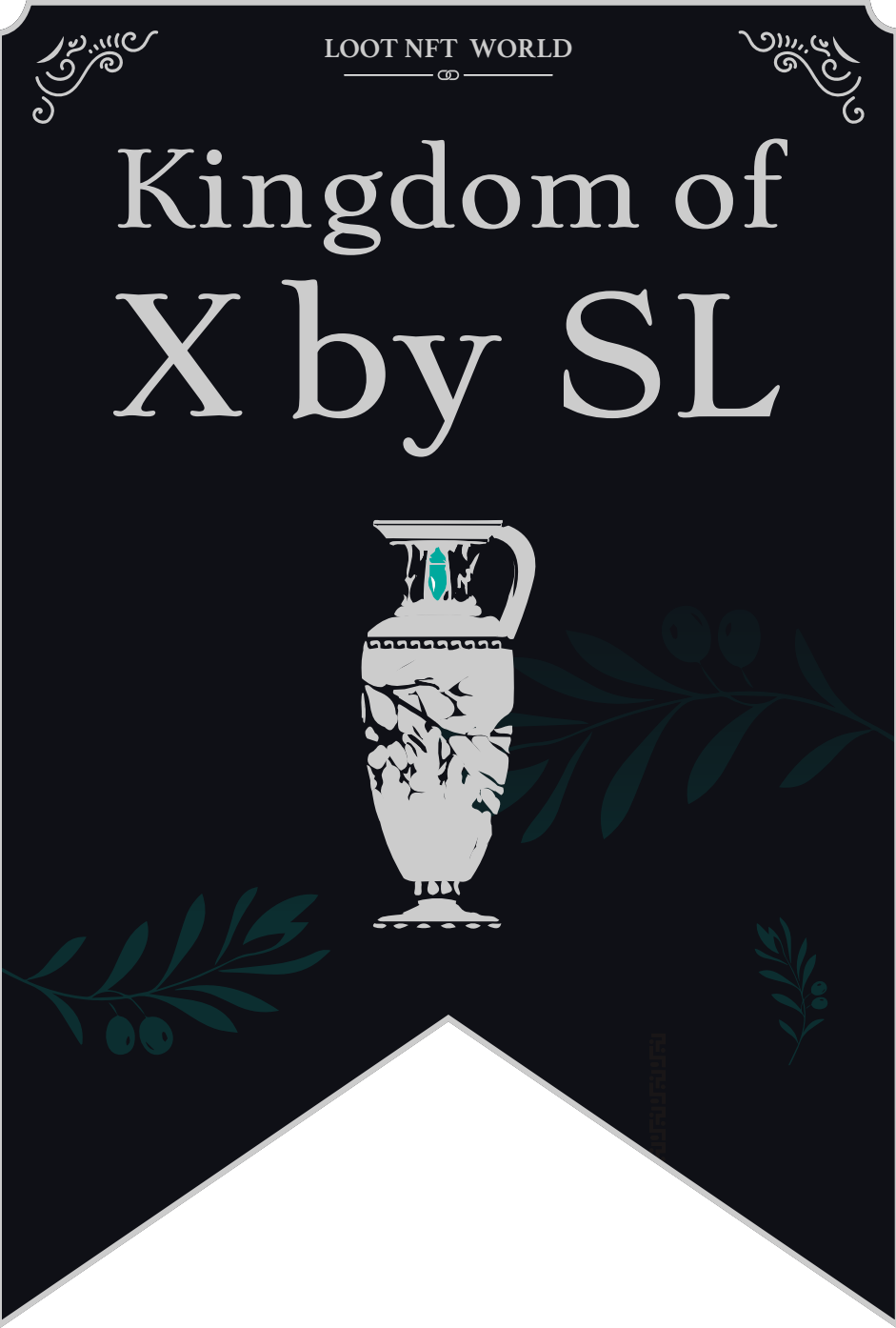
*The Great  
Empire*

*Territorio  
LTT ST*



*Approved by Registrar of  
Lands of  
Jimmy  
Jimmy Auckland*



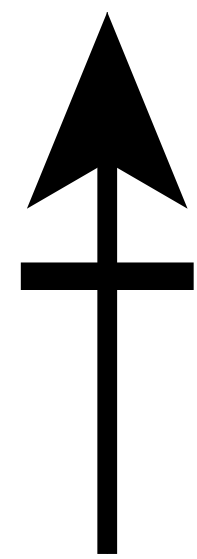


THE ARISTOCRATS

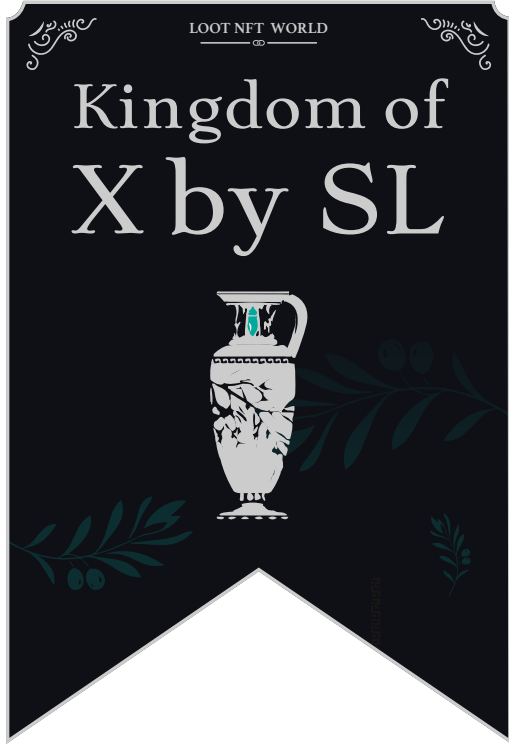
The richest state in Loot NFT World. Special tablets are used to conduct high value auctions at galas and special events. The aristocrats donate 7% of their earnings to the Stakers, a special group of people, from the Great Empire. Ever since the marriage of the Sultan's daughter and the prince of X by SL, the Kingdom also donates 3% of its earnings to the Royaume De Satoshi.

GEOGRAPHY

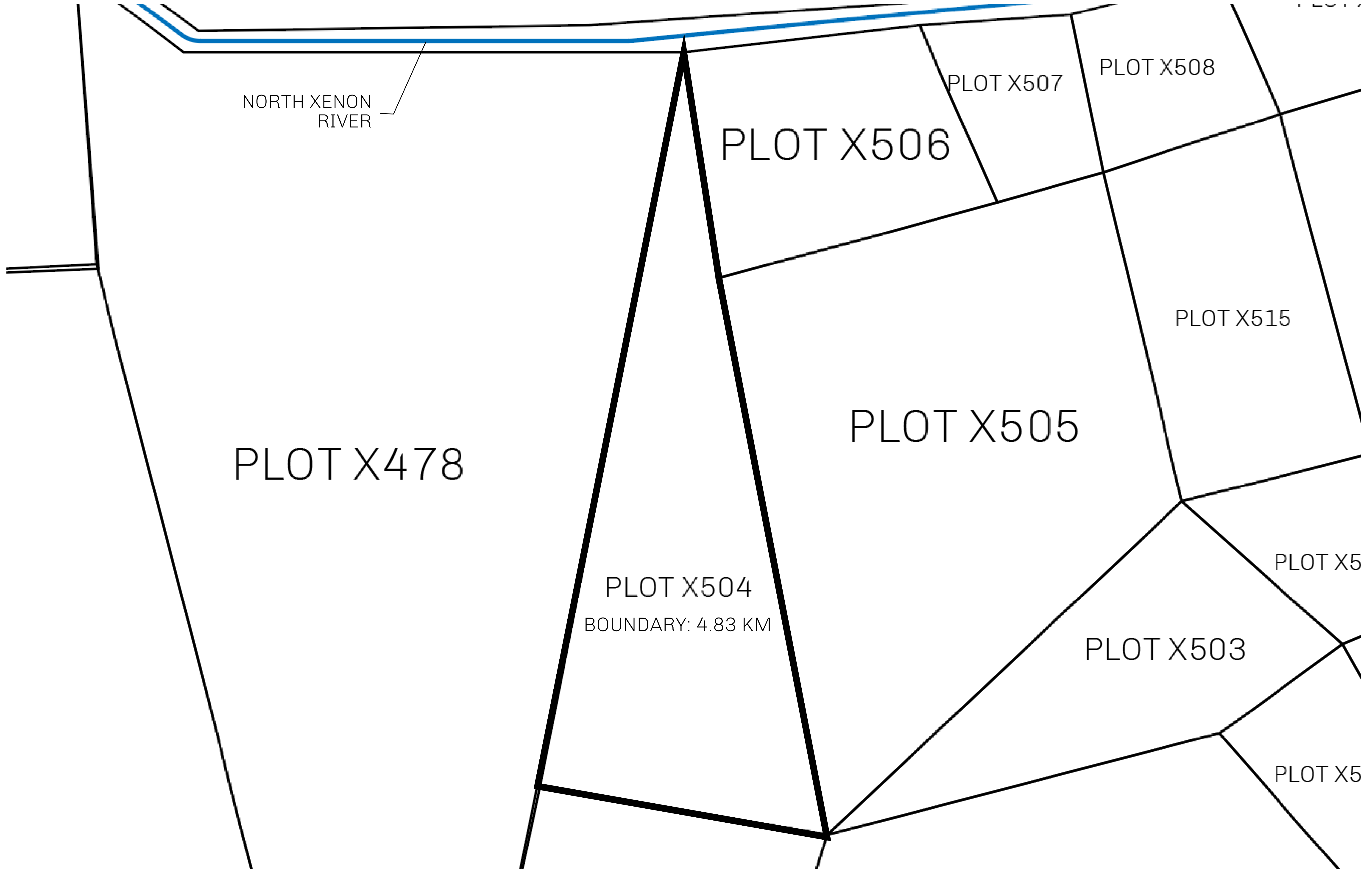
COASTLINE	93.89 KM (58.34 MILES)
BORDERS	OCEAN, THE GREAT EMPIRE, SL
HIGHEST POINT	PEAK HERMES +7899 M
LOWEST POINT	PORT OF EXCLUSIVITY 0 M
PLOTS	549
SCALE	1:50000

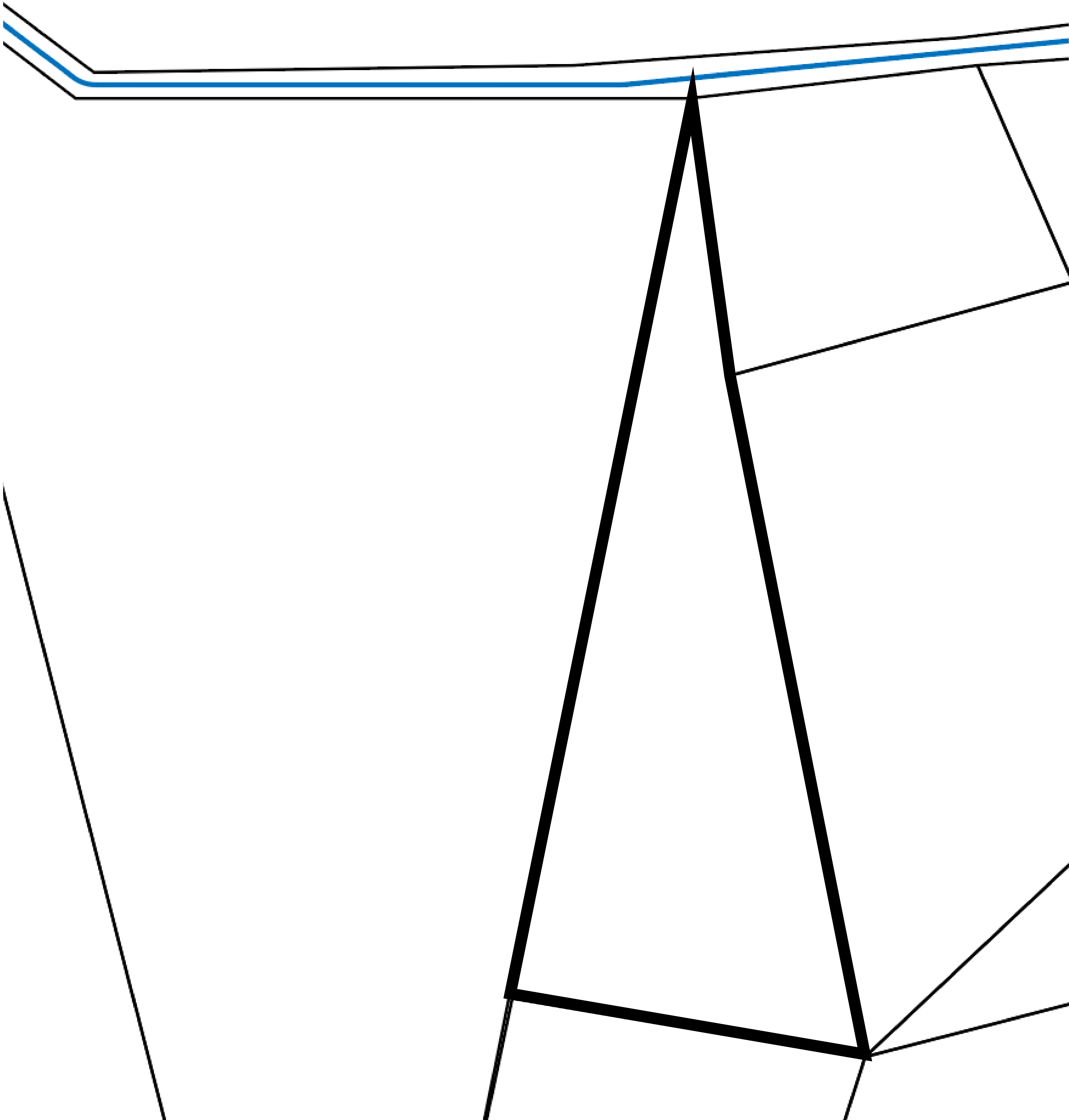






<b><i>H.M. LNFT Land Registry</i></b>		TITLE NUMBER	
		<b>X504-221121</b>	
ADMINISTRATIVE AREA	<b>KINGDOM OF X BY SL</b>	ISSUED <b>22 November 2021</b> <i>bi.</i>	SCALE <b>1/50000</b>
OWNER ENTITLEMENT	<b>Type W-XBYSL: Share of 0.5% of all X by SL winning bid values based on number of NFT Stories minted (rewarded in Credits); Automatic invite to X by SL; Mint 4 NFT Stories</b>		





OFFICIAL PERSPECTIVE SHEET FOR FILING  
Indicate vantage point for each drawing. Copy and  
mark each sheet required prior to filing.

Guide - Vantage point should be  
indicated as shown in the diagram:

