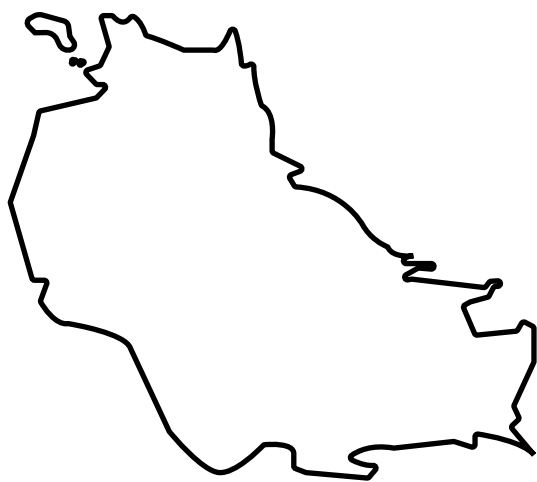


LOOT NFT WORLD

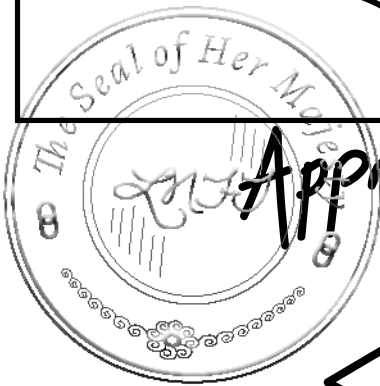


HABN Island

Vault Atoll

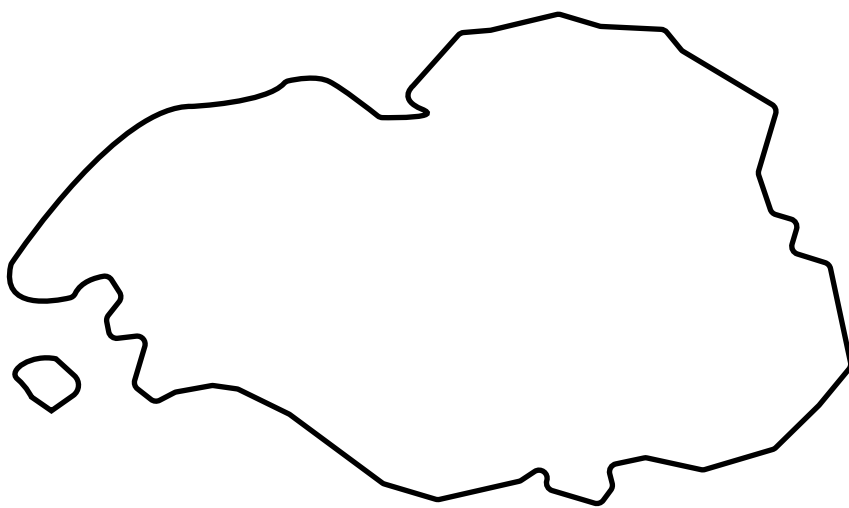
*Royaume de
Satoshi*

*Kingdom of
X by SL*



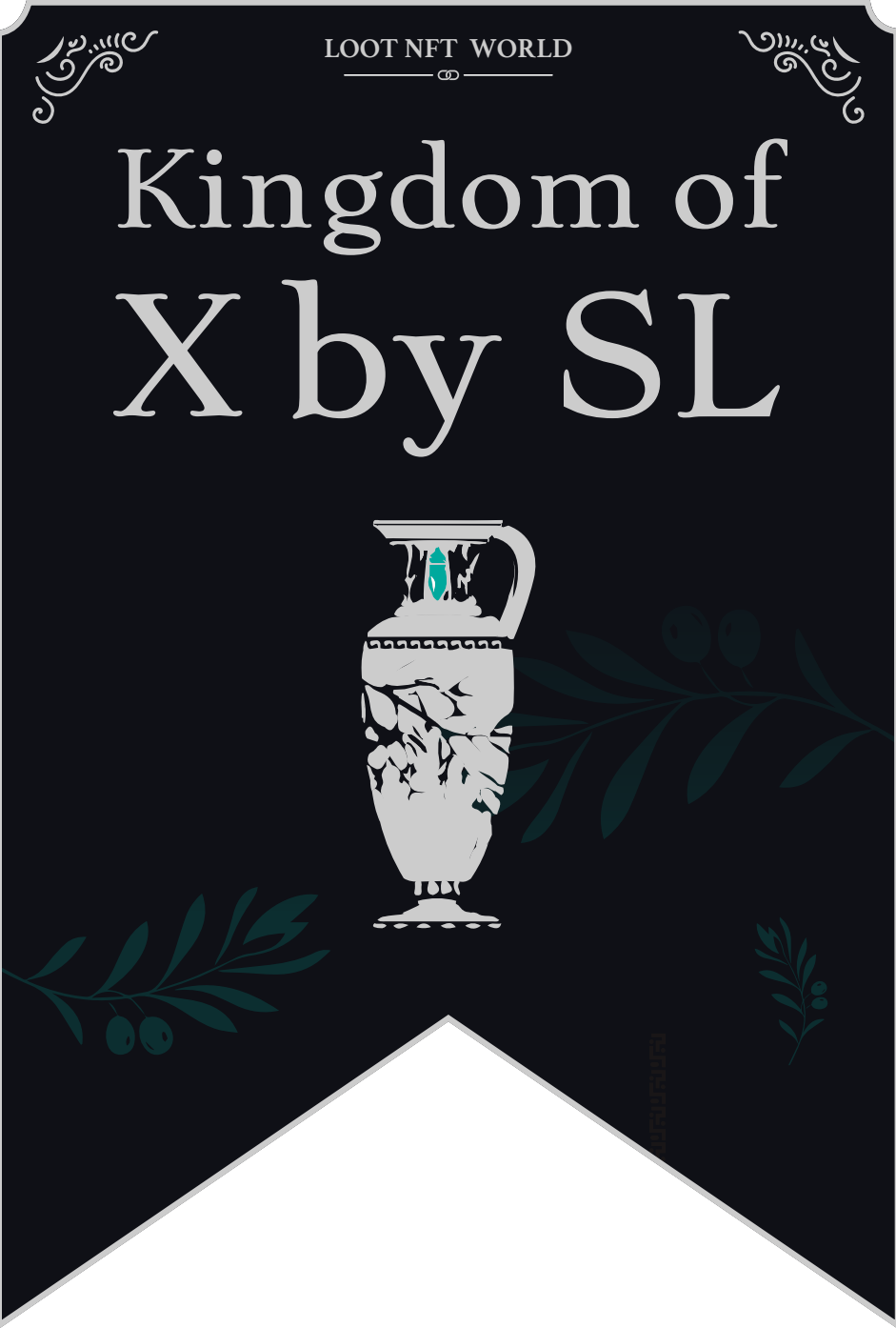
*Approved by Registrar of
Lands of
Jimmy Auckland*

*The Great
Empire*



Isle of Fund

*Territorio
LTT ST*

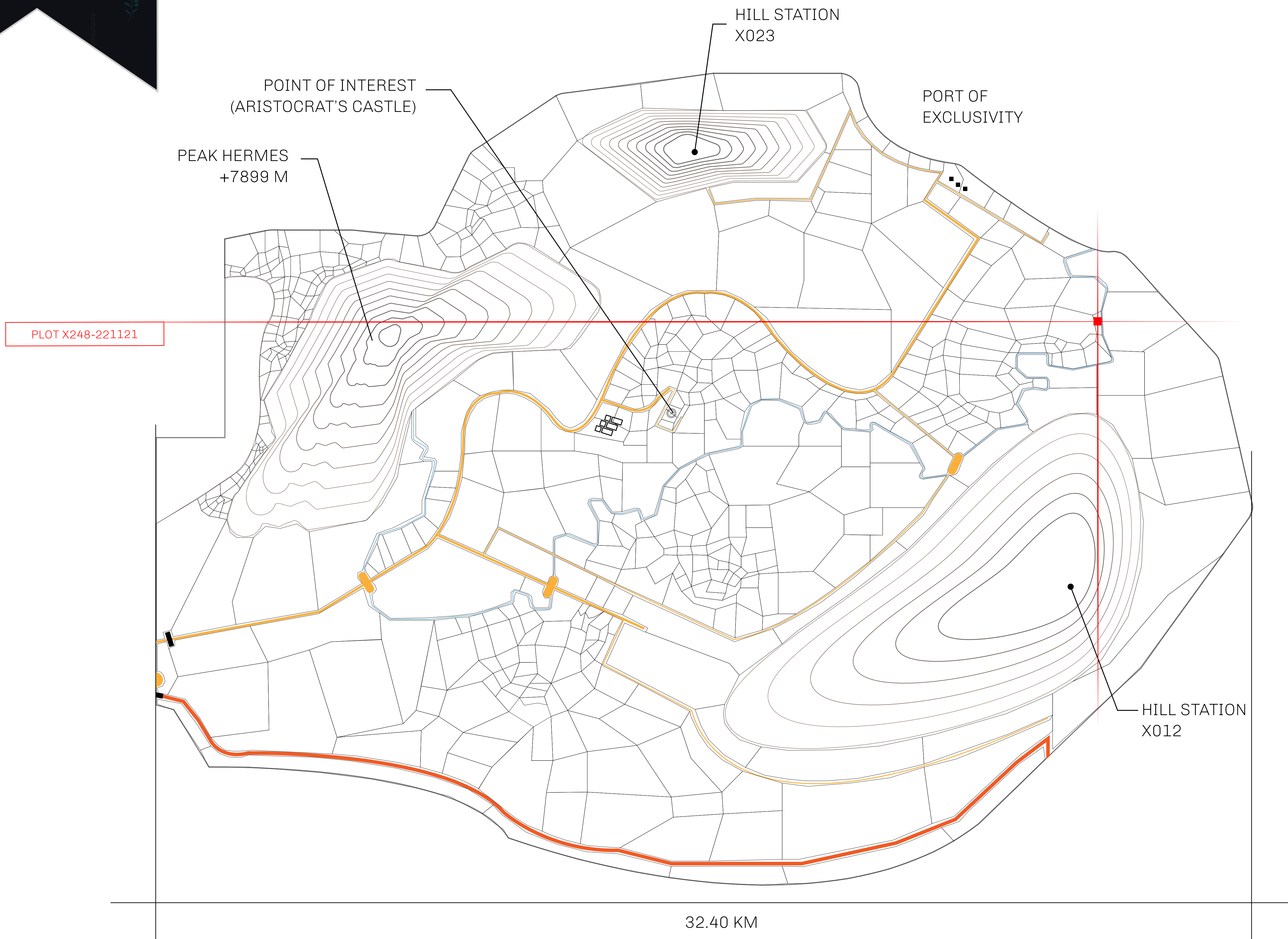
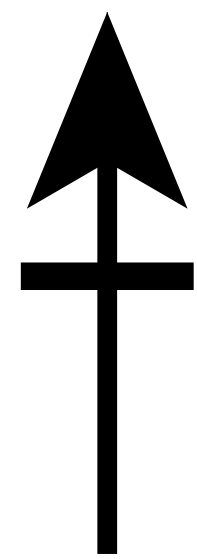


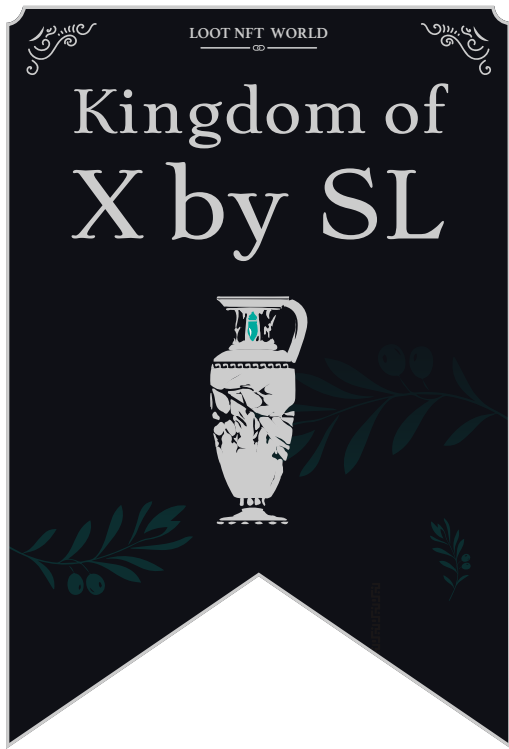
THE ARISTOCRATS

The richest state in Loot NFT World. Special tablets are used to conduct high value auctions at galas and special events. The aristocrats donate 7% of their earnings to the Stakers, a special group of people, from the Great Empire. Ever since the marriage of the Sultan's daughter and the prince of X by SL, the Kingdom also donates 3% of its earnings to the Royaume De Satoshi.

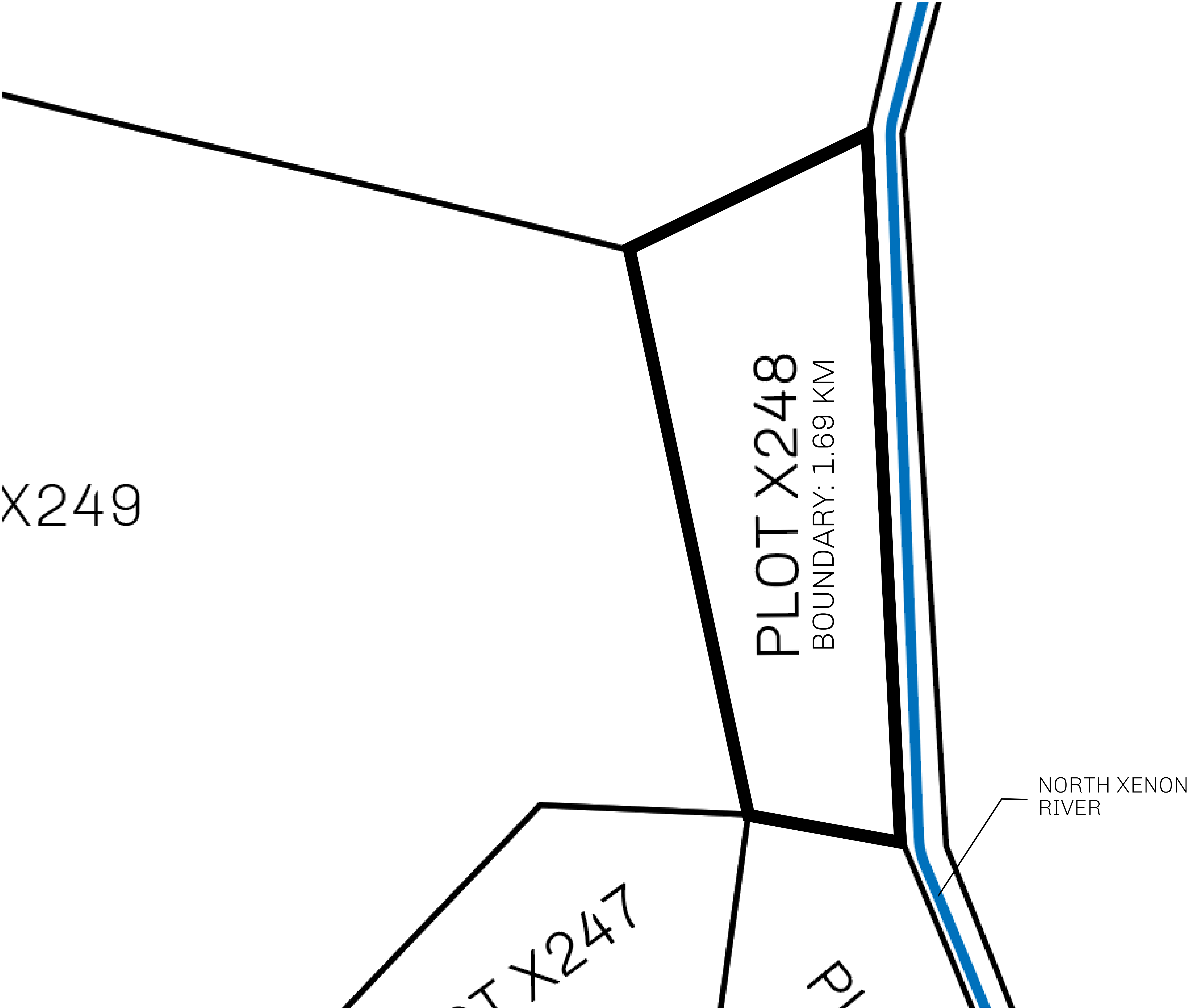
GEOGRAPHY

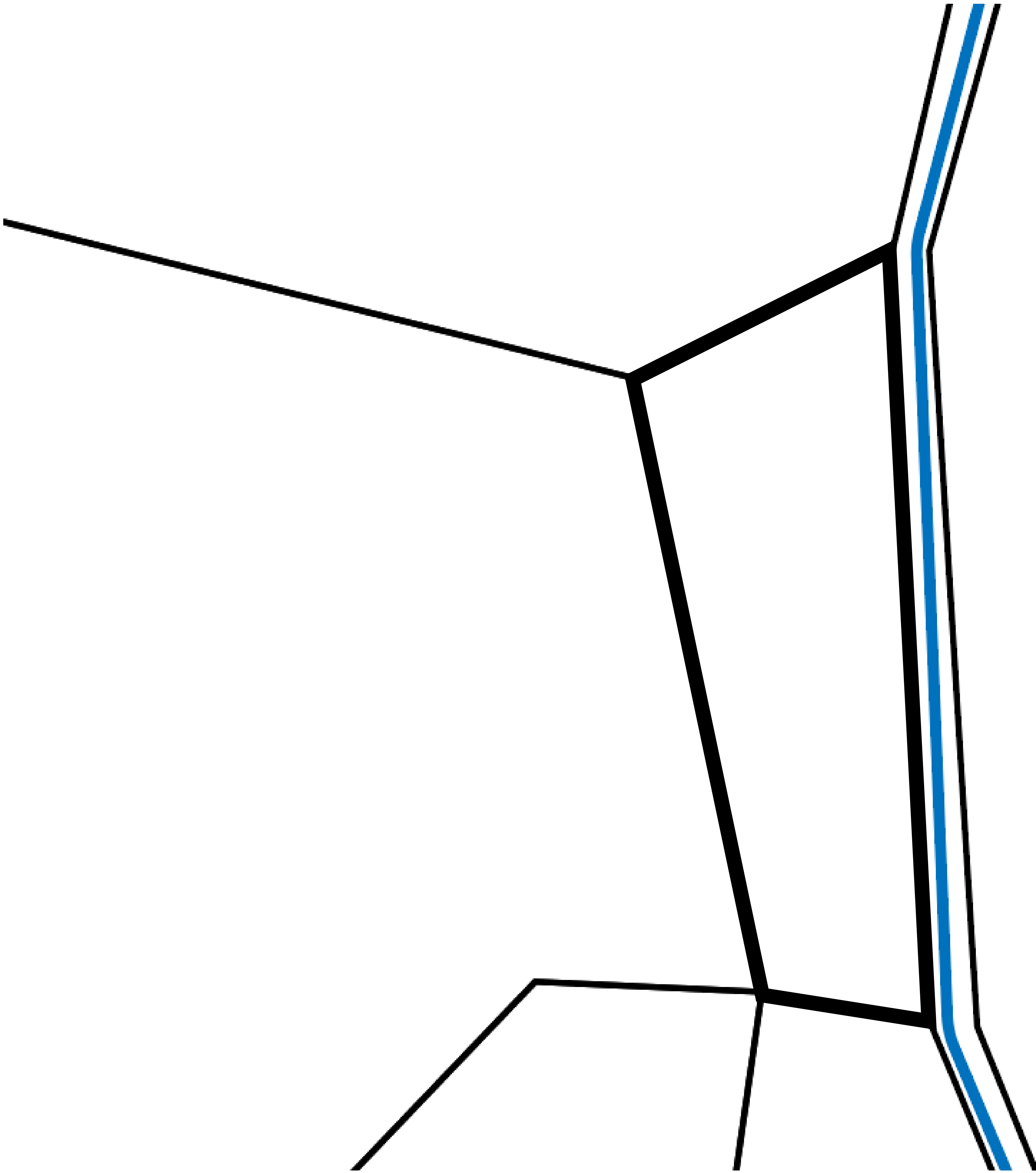
COASTLINE	93.89 KM (58.34 MILES)
BORDERS	OCEAN, THE GREAT EMPIRE, SL
HIGHEST POINT	PEAK HERMES +7899 M
LOWEST POINT	PORT OF EXCLUSIVITY 0 M
PLOTS	549
SCALE	1:50000





<i>H.M. LNFT Land Registry</i>		TITLE NUMBER	
		X248-221121	
ADMINISTRATIVE AREA	KINGDOM OF X BY SL	ISSUED 22 November 2021 <i>bi.</i>	SCALE 1/50000
OWNER ENTITLEMENT	Type W-XBYSL: Share of 0.5% of all X by SL winning bid values based on number of NFT Stories minted (rewarded in Credits); Automatic invite to X by SL; Mint 4 NFT Stories		





OFFICIAL PERSPECTIVE SHEET FOR FILING
Indicate vantage point for each drawing. Copy and mark each sheet required prior to filing.

Guide - Vantage point should be indicated as shown in the diagram:

