

# LOOT NFT WORLD



*HABN Island*

*Vault Atoll*



*Isle of Fund*

*Royaume de  
Satoshi*

*Kingdom of  
X by SL*

*The Great  
Empire*

*Territorio  
LTT ST*



*Approved by Registrar of  
Lands of  
Jimmy  
Jimmy Auckland*



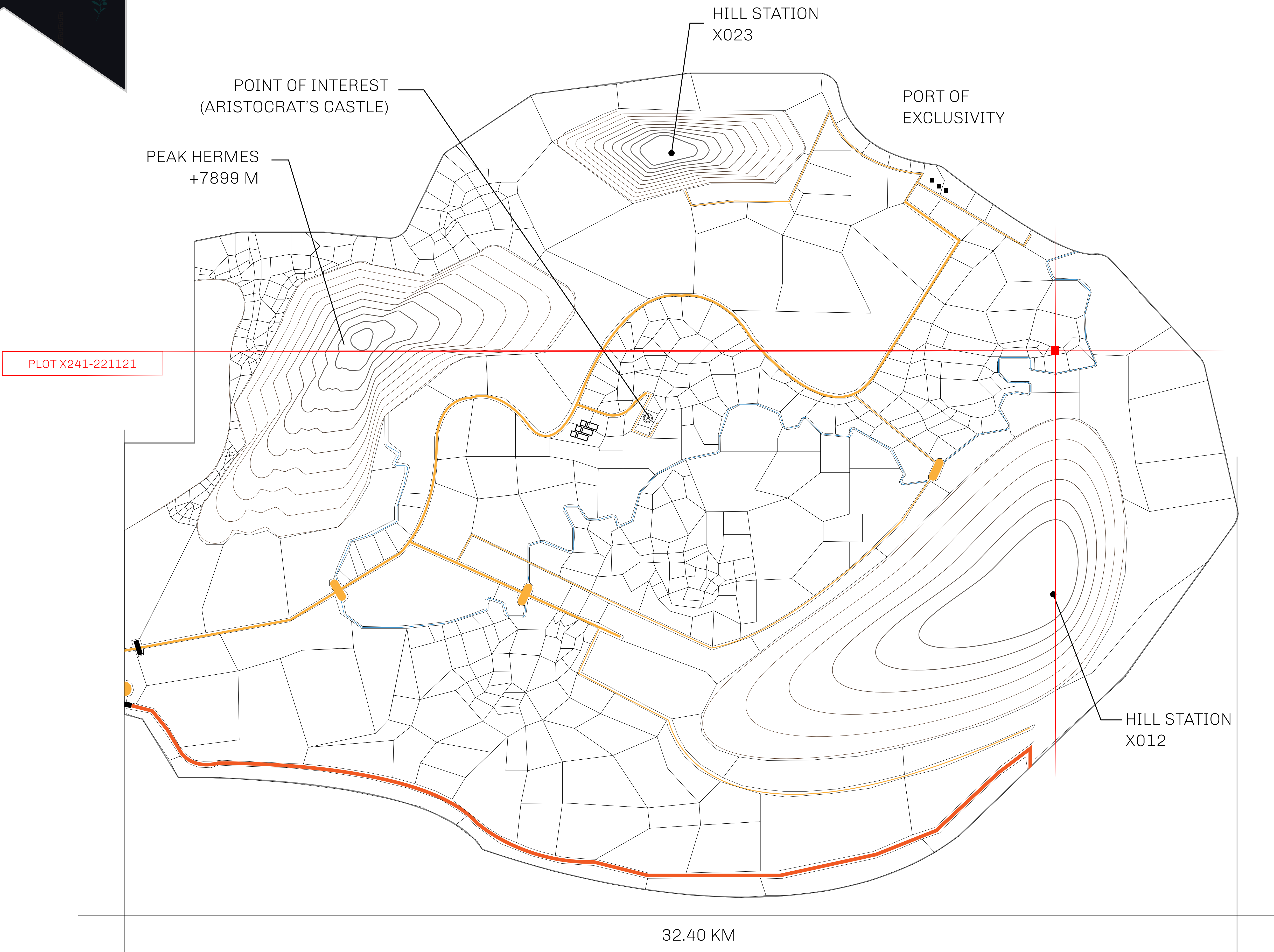


THE ARISTOCRATS

The richest state in Loot NFT World. Special tablets are used to conduct high value auctions at galas and special events. The aristocrats donate 7% of their earnings to the Stakers, a special group of people, from the Great Empire. Ever since the marriage of the Sultan's daughter and the prince of X by SL, the Kingdom also donates 3% of its earnings to the Royaume De Satoshi.

GEOGRAPHY

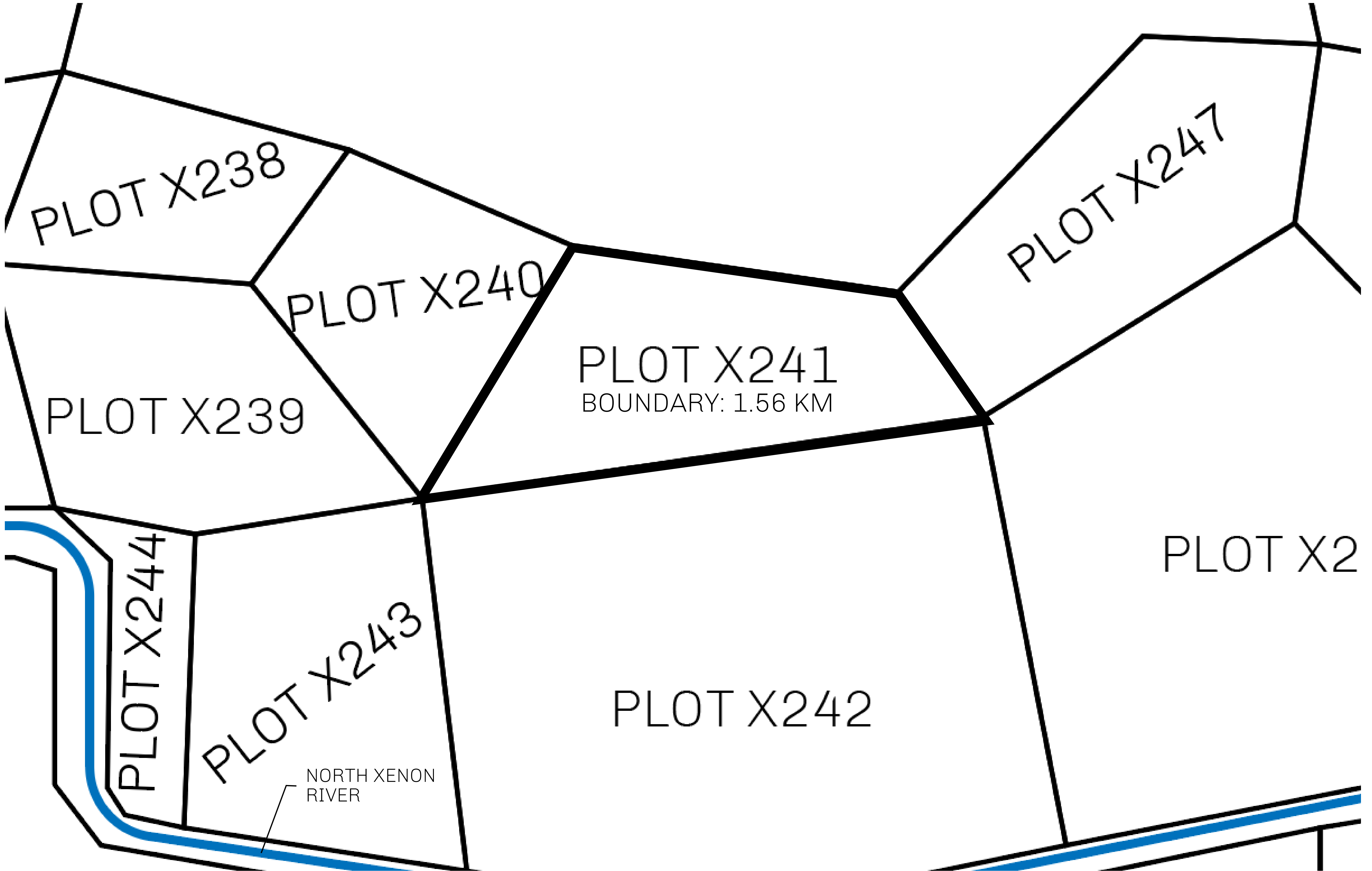
|               |                             |
|---------------|-----------------------------|
| COASTLINE     | 93.89 KM (58.34 MILES)      |
| BORDERS       | OCEAN, THE GREAT EMPIRE, SL |
| HIGHEST POINT | PEAK HERMES +7899 M         |
| LOWEST POINT  | PORT OF EXCLUSIVITY 0 M     |
| PLOTS         | 549                         |
| SCALE         | 1:50000                     |







|                                |   |                                    |               |
|--------------------------------|---|------------------------------------|---------------|
| <b>H.M. LNFT Land Registry</b> |   | TITLE NUMBER                       |               |
|                                |   | <b>X241-221121</b>                 |               |
| ADMINISTRATIVE AREA            | <b>KINGDOM OF X BY SL</b>   | ISSUED 22 November 2021 <i>bi.</i> | SCALE 1/50000 |
| OWNER ENTITLEMENT              | <b>Type W-XBYSL: Share of 0.5% of all X by SL winning bid values based on number of NFT Stories minted (rewarded in Credits); Automatic invite to X by SL; Mint 4 NFT Stories</b> |                                    |               |



OFFICIAL PERSPECTIVE SHEET FOR FILING  
Indicate vantage point for each drawing. Copy and mark each sheet required prior to filing.

Guide - Vantage point should be indicated as shown in the diagram:

