

LOOT NFT WORLD



HABN Island



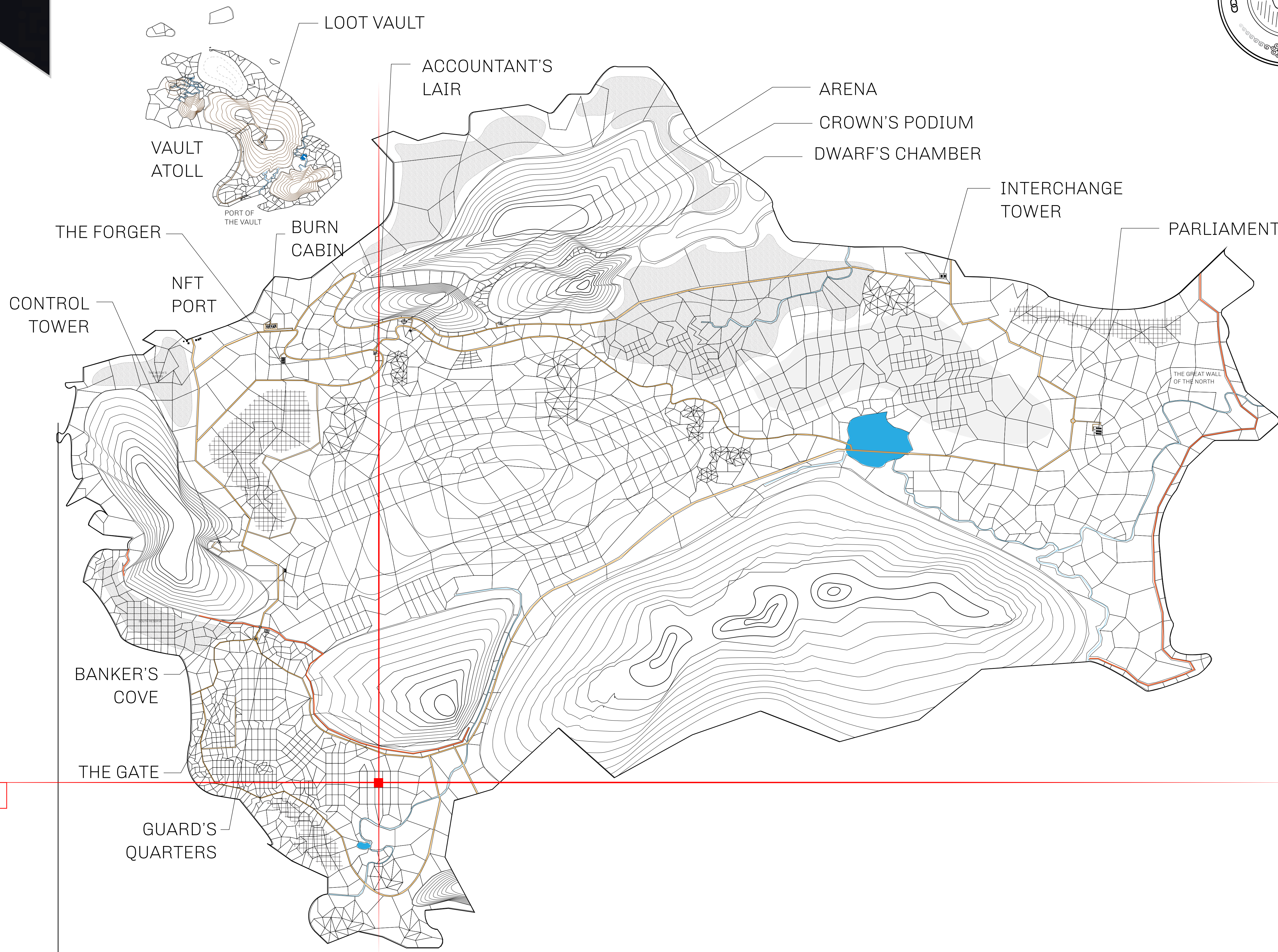
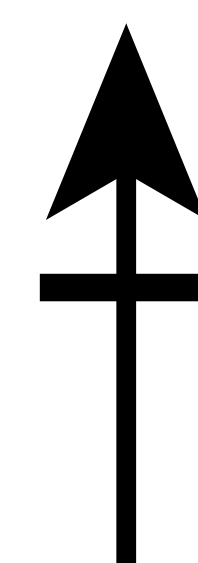


HER MAJESTY'S GATED WORLD

As an economic and ruling powerhouse, the Great Empire controls the issuance and trade of BUN, LTT, and USDC reward credits. Decisions by its sitting parliamentarians affect Loot NFT World. Following the last war, border controls are tight and only invitees can enter. Each Sunday, all eyes focus on the Arena and the Crown's Podium, where battle-bidding auctions rage. The battle pit is not for the fainthearted and strategy plays a crucial role in winning.

GEOGRAPHY


| | |
|---------------|--|
| COASTLINE | 462.64 KM (287.47 MILES) |
| BORDERS | OCEAN, ROYAUME DE SATOSHI, X BY SL & TERRITORIO LTT ST |
| HIGHEST POINT | MOUNT ARES +8120 M |
| LOWEST POINT | NFT PORT 0 M |
| PLOTS | 2284 |
| SCALE | 1:50000 |

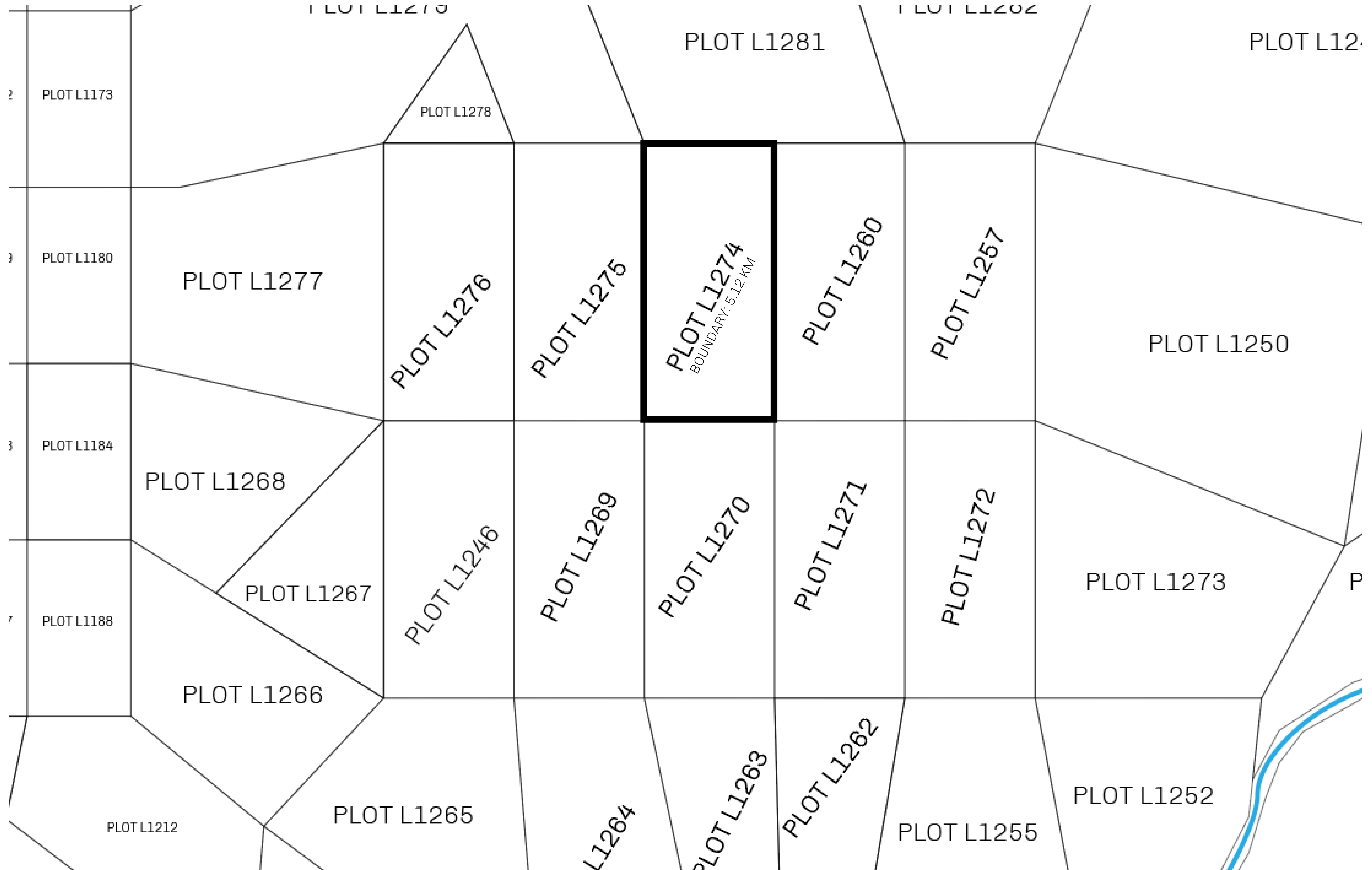


PLOT L1274-041021

129.07 KM



| | | | |
|--------------------------------|--|---|----------------------|
| H.M. LNFT Land Registry | | TITLE NUMBER | |
| | | L1274-041021 | |
| ADMINISTRATIVE AREA | THE GREAT EMPIRE | ISSUED 04 October 2021 <i>BJ</i> | SCALE 1/50000 |
| OWNER ENTITLEMENT | Type W-GE: Share of 0.3% of all BUN sales based on number of NFT Stories minted (rewarded in Credits); Mint 4 NFT Stories  | | |



OFFICIAL PERSPECTIVE SHEET FOR FILING
Indicate vantage point for each drawing. Copy and
mark each sheet required prior to filing.

Guide - Vantage point should be
indicated as shown in the diagram:

