

# LOOT NFT WORLD



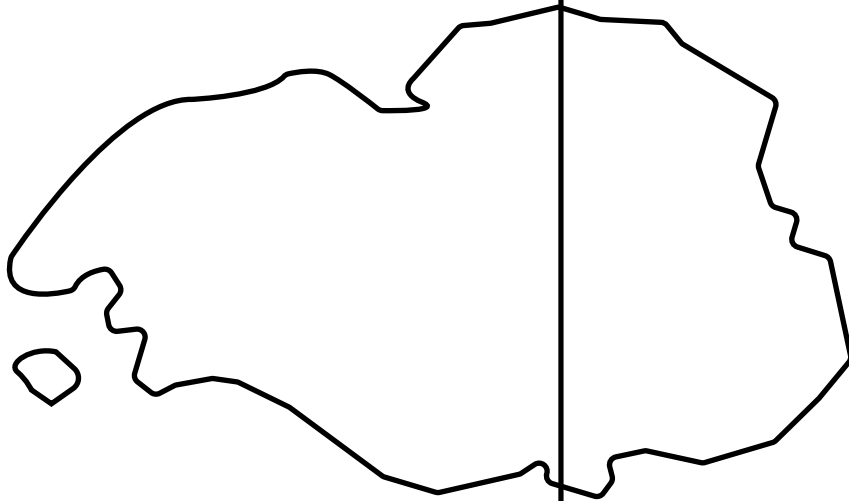
*HABN Island*

*Vault Atoll*

*Royaume de Satoshi*

*Kingdom of X by SL*

*The Great Empire*



*Isle of Fund*



*Approved by Registrar of Lands*

*John Dwyer - Administrator TGE*

*Territorio LTT ST*



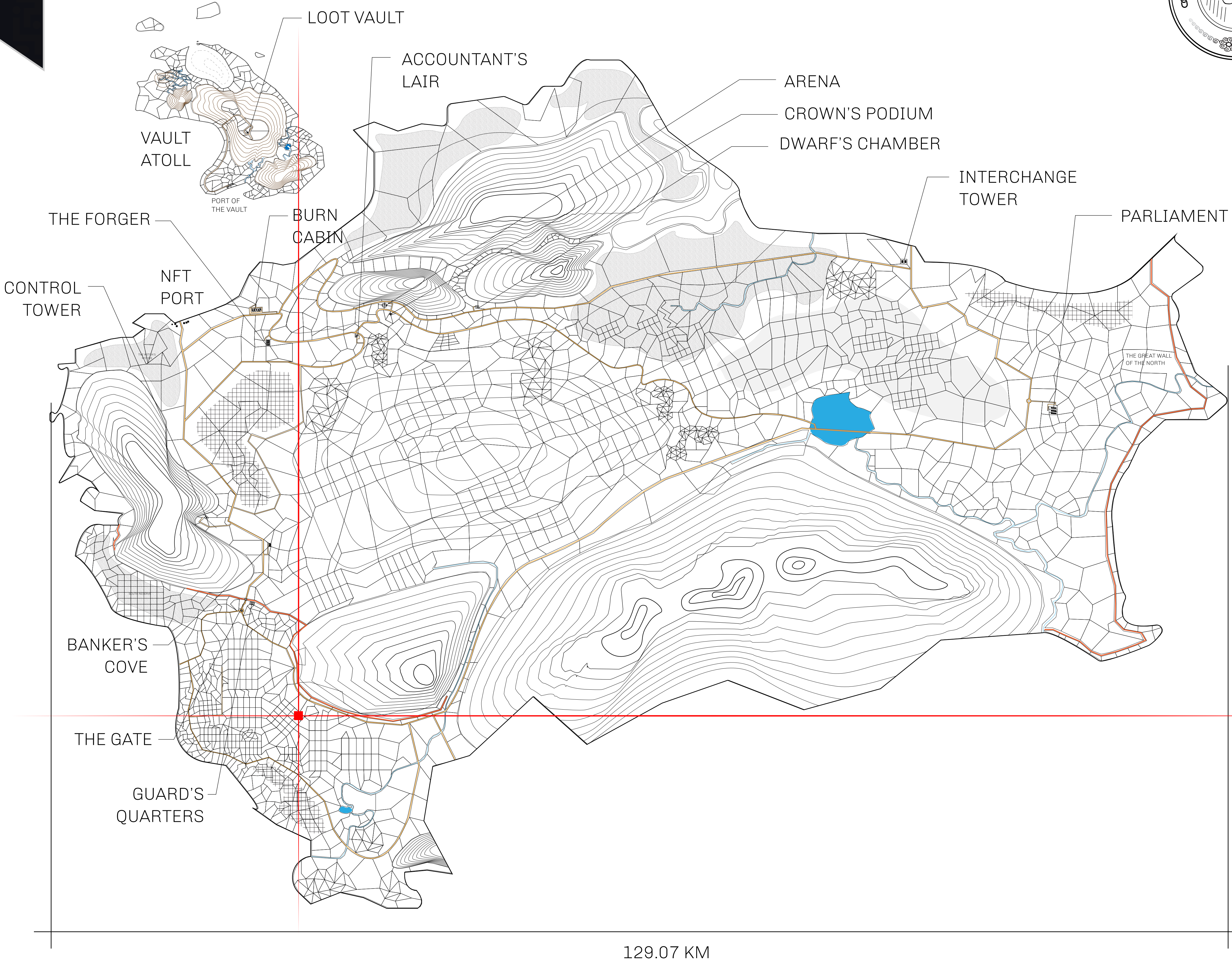


HER MAJESTY'S GATED WORLD

The largest surface area of all of the realms, the great empire is the most populous country and second only as economic powerhouse to X by SL. Within its borders, the parliament sits, banks issue BUN, LTT, and USDC credits, auctions happen in the arena, NFTs are minted and custodied, in addition to containing other commercial activities. Following the last war, border controls are tight and only persons invited can come in.

GEOGRAPHY

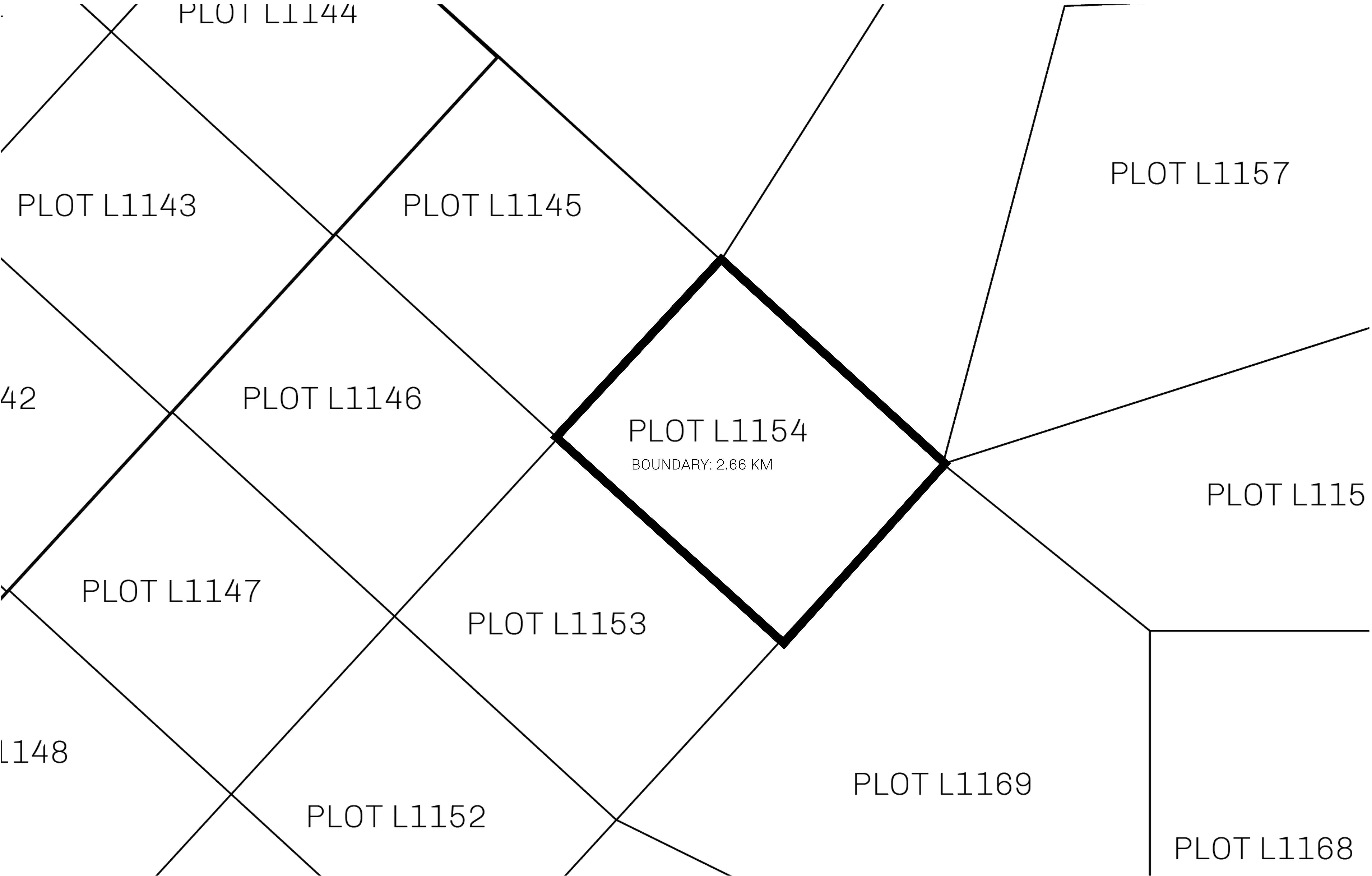
COASTLINE	462.64 KM (287.47 MILES)
BORDERS	OCEAN, ROYAUME DE SATOSHI, X BY SL & TERRITORIO LTT ST
HIGHEST POINT	MOUNT ARES +8120 M
LOWEST POINT	NFT PORT 0 M
PLOTS	2284
SCALE	1:50000







<b><i>H.M. LNFT Land Registry</i></b>		TITLE NUMBER	
		<b>L1154-041021</b>	
ADMINISTRATIVE AREA	<b>THE GREAT EMPIRE</b>	ISSUED <b>04 October 2021</b> <i>bi.</i>	SCALE <b>1/50000</b>
OWNER ENTITLEMENT	<b>Type W-GE: Share of 0.3% of all BUN sales based on number of NFT Stories minted (rewarded in Credits); Mint 4 NFT Stories</b>		



OFFICIAL PERSPECTIVE SHEET FOR FILING  
Indicate vantage point for each drawing. Copy and mark each sheet required prior to filing.

Guide - Vantage point should be indicated as shown in the diagram:

