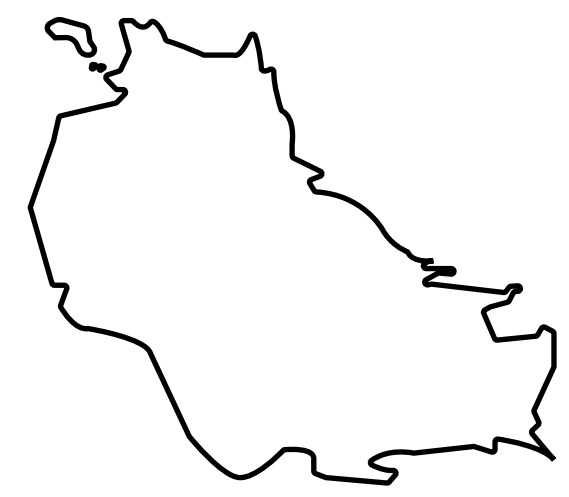
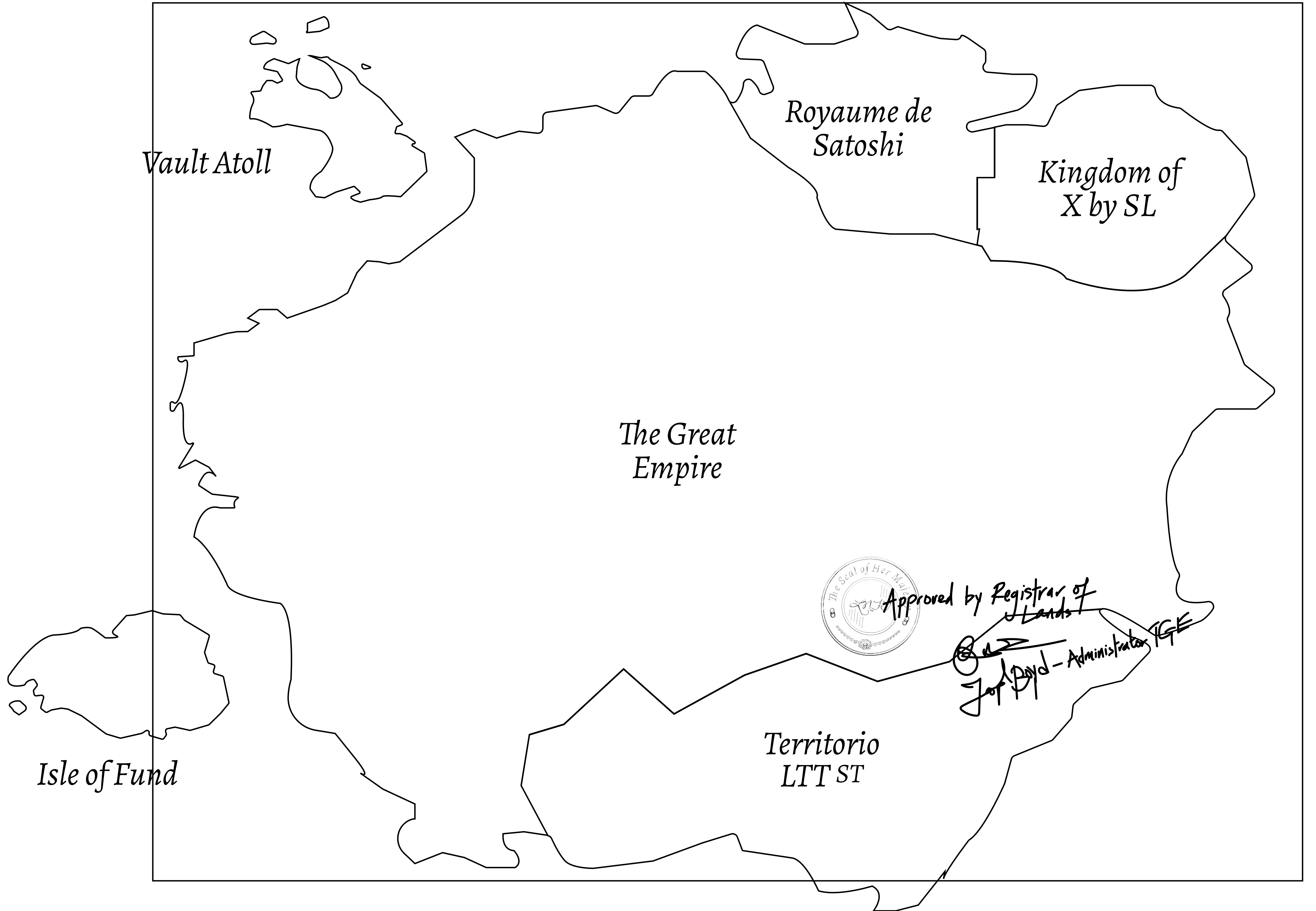


LOOT NFT WORLD



HABN Island



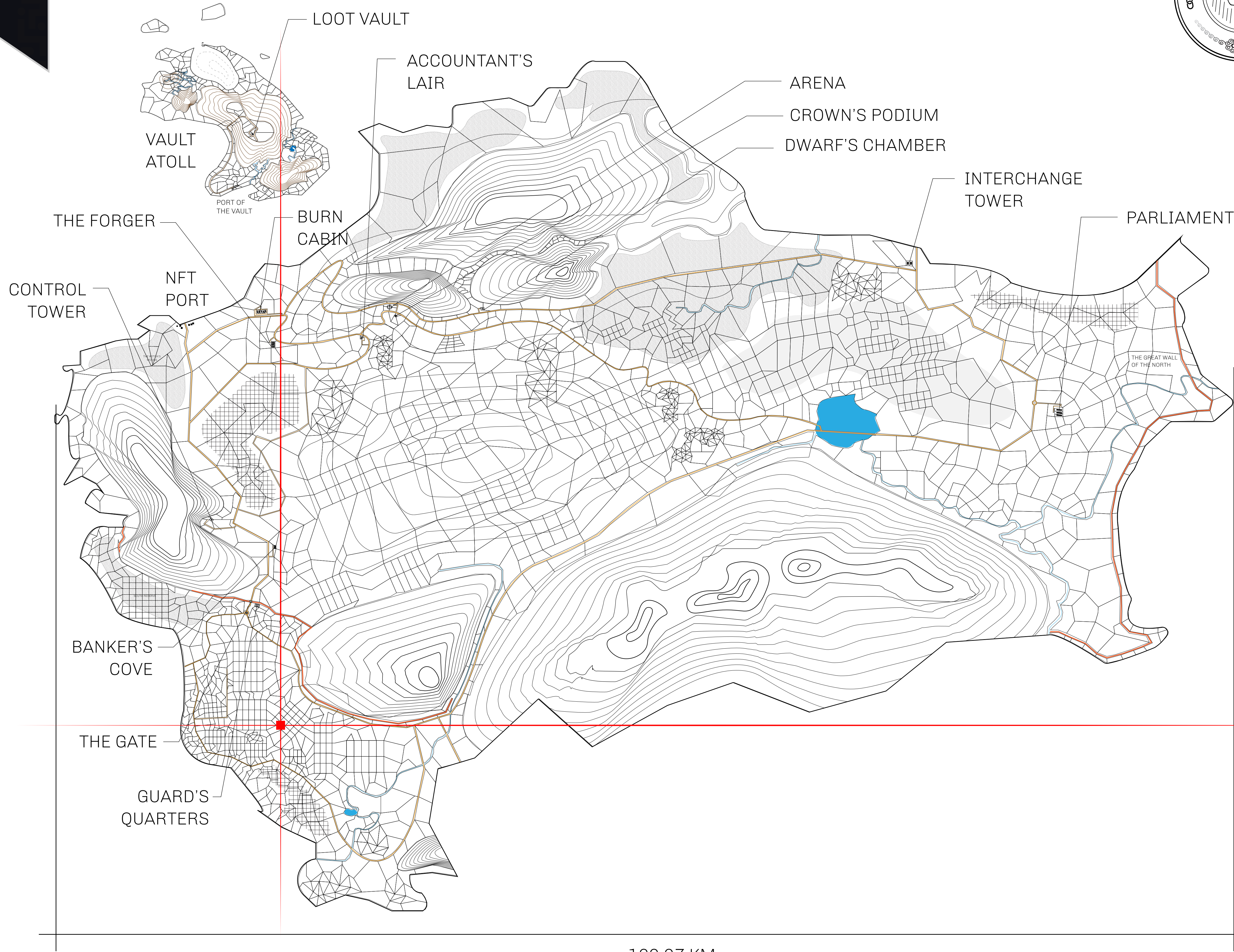
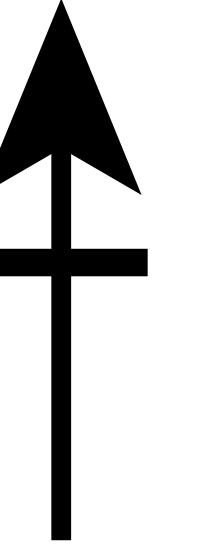


HER MAJESTY'S GATED WORLD

The largest surface area of all of the realms, the great empire is the most populous country and second only as economic powerhouse to X by SL. Within its borders, the parliament sits, banks issue BUN, LTT, and USDC credits, auctions happen in the arena, NFTs are minted and custodied, in addition to containing other commercial activities. Following the last war, border controls are tight and only persons invited can come in.

GEOGRAPHY

COASTLINE	462.64 KM (287.47 MILES)
BORDERS	OCEAN, ROYAUME DE SATOSHI, X BY SL & TERRITORIO LTT ST
HIGHEST POINT	MOUNT ARES +8120 M
LOWEST POINT	NFT PORT 0 M
PLOTS	2284
SCALE	1:50000

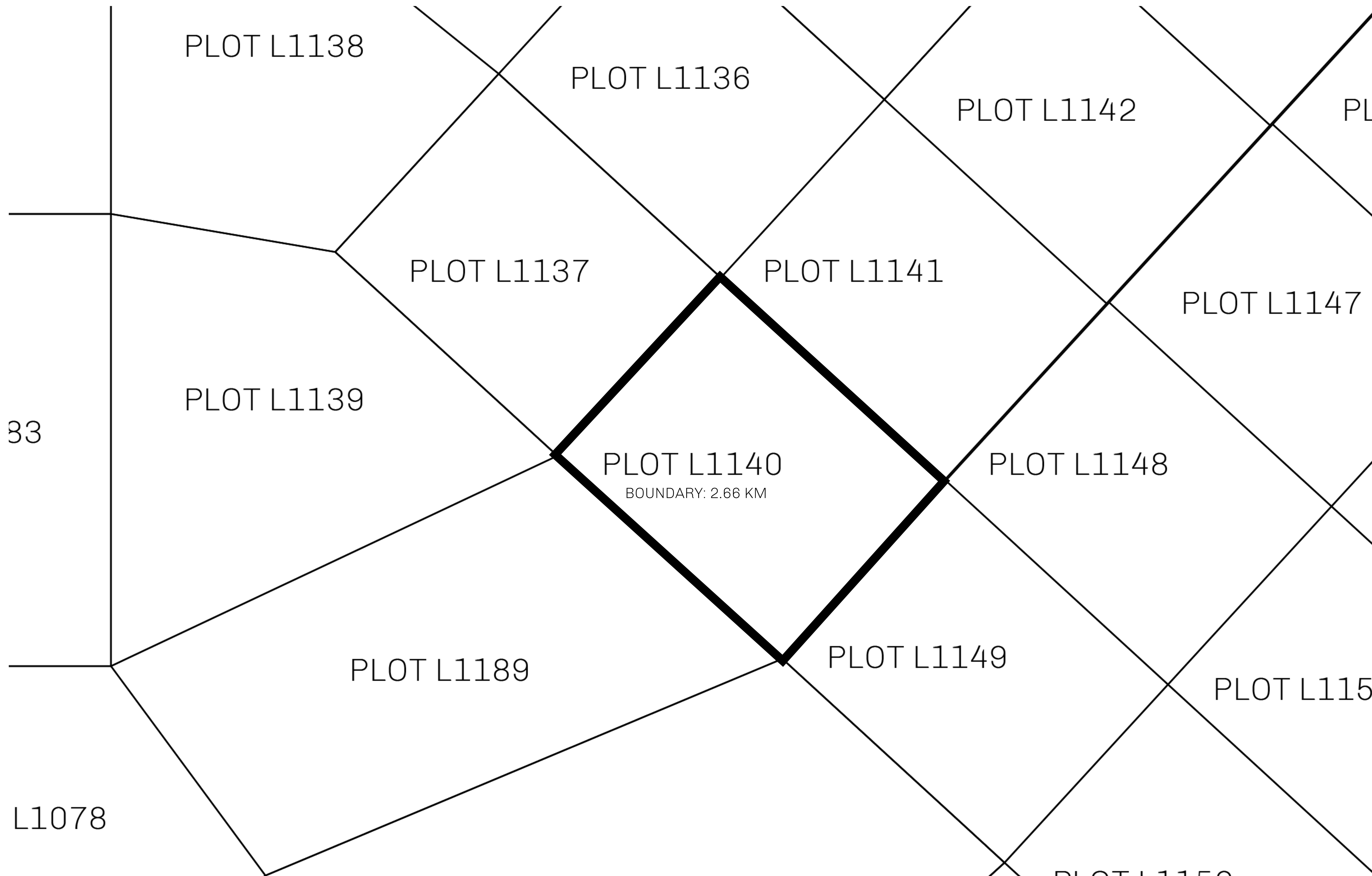
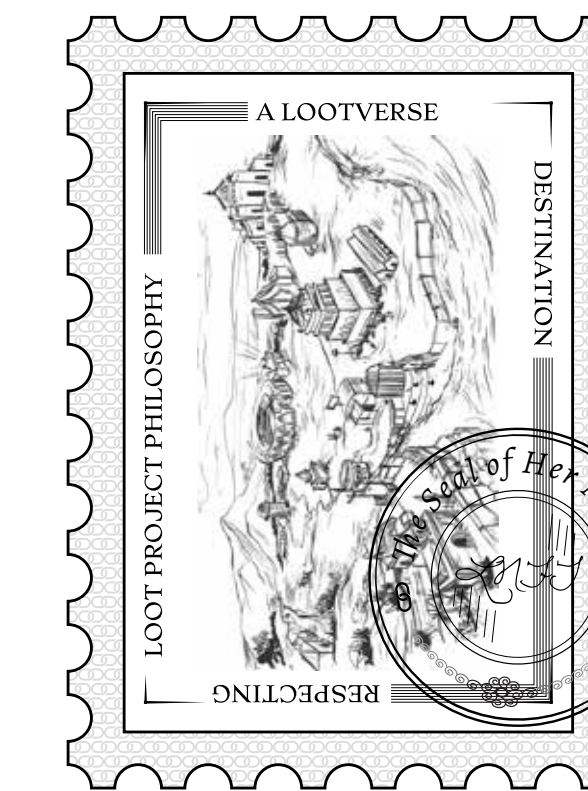


PLOT L1140-041121

129.07 KM



H.M. LNFT Land Registry		TITLE NUMBER	
		L1140-041021	
ADMINISTRATIVE AREA	THE GREAT EMPIRE	ISSUED 04 October 2021 <i>BJ.</i>	SCALE 1/50000
OWNER ENTITLEMENT	Type W-GE: Share of 0.3% of all BUN sales based on number of NFT Stories minted (rewarded in Credits); Mint 4 NFT Stories		



OFFICIAL PERSPECTIVE SHEET FOR FILING
Indicate vantage point for each drawing. Copy and
mark each sheet required prior to filing.

Guide - Vantage point should be
indicated as shown in the diagram:

