

# LOOT NFT WORLD



*HABN Island*

*Vault Atoll*

*Royaume de Satoshi*

*Kingdom of X by SL*

*The Great Empire*



*Isle of Fund*



*Approved by Registrar of Lands*

*John Dwyer - Administrator TGE*

*Territorio LTT ST*



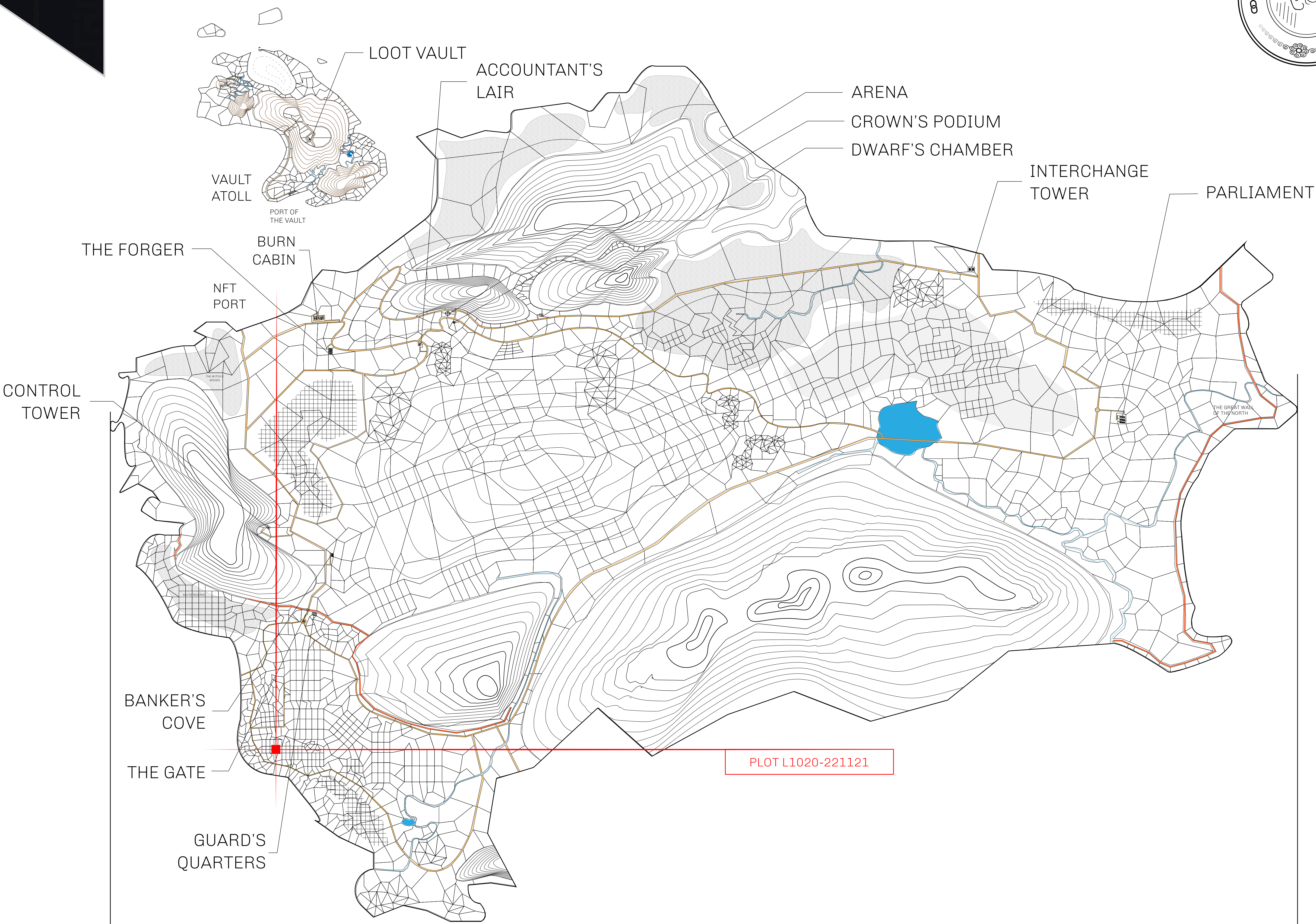


HER MAJESTY’S GATED WORLD

As an economic and ruling powerhouse, the Great Empire controls the issuance and trade of BUN, LTT, and USDC reward credits. Decisions by its sitting parliamentarians affect Loot NFT World. Following the last war, border controls are tight and only invitees can enter. Each Sunday, all eyes focus on the Arena and the Crown's Podium, where battle-bidding auctions rage. The battle pit is not for the fainthearted and strategy plays a crucial role in winning.

GEOGRAPHY

COASTLINE	462.64 KM (287.47 MILES)
BORDERS	OCEAN, ROYAUME DE SATOSHI, X BY SL & TERRITORIO LTT ST
HIGHEST POINT	MOUNT ARES +8120 M
LOWEST POINT	NFT PORT 0 M
PLOTS	2284
SCALE	1:50000

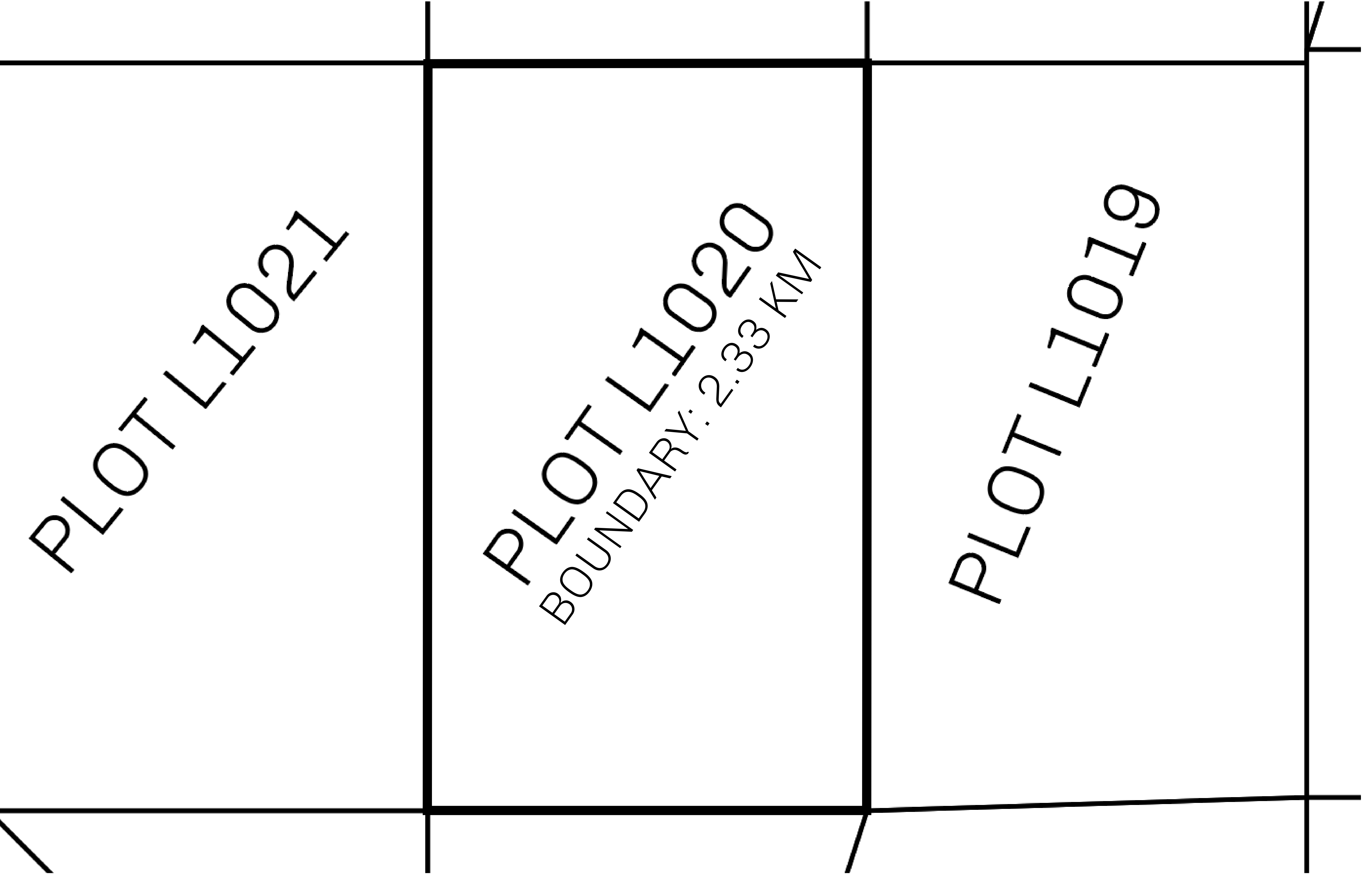


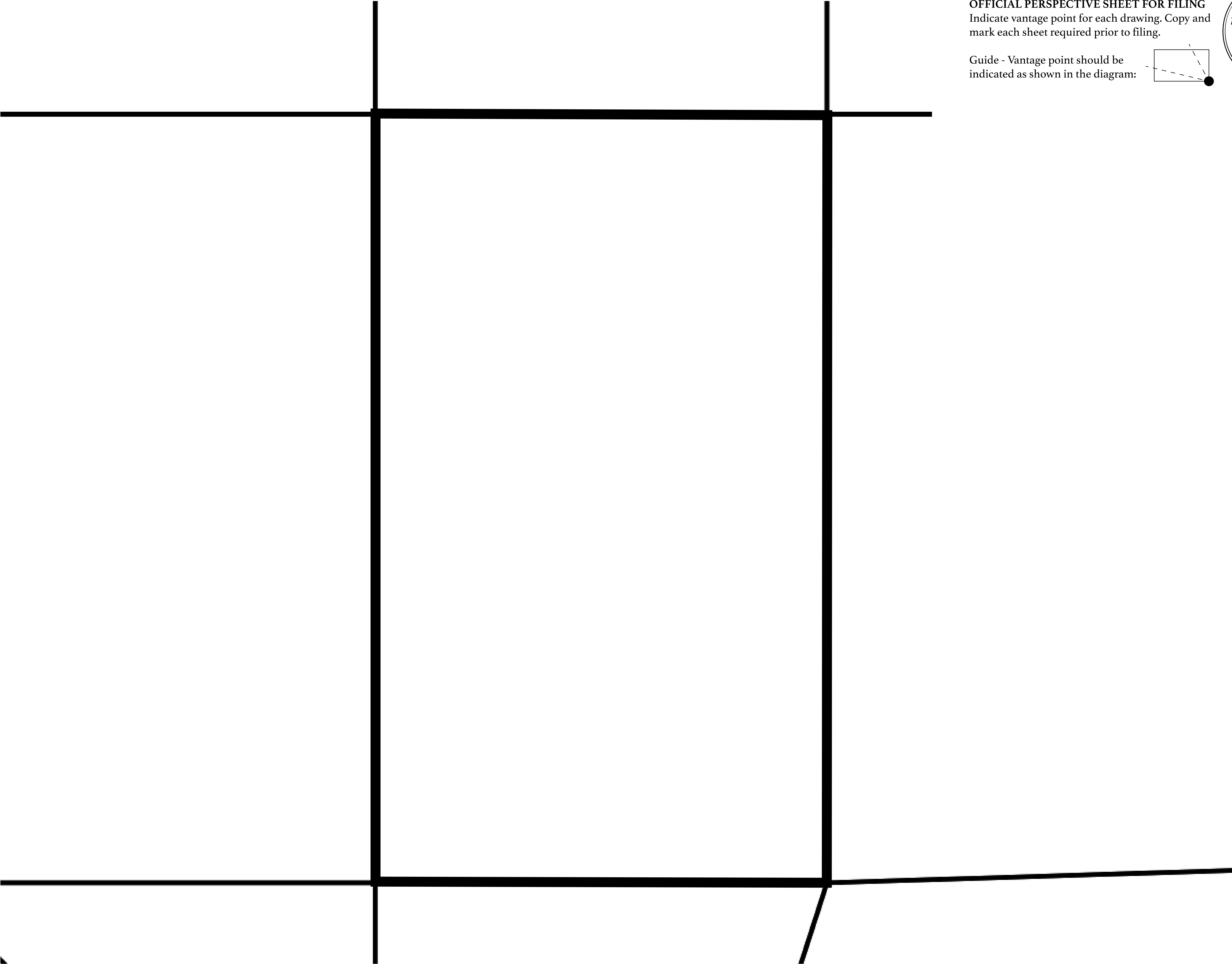
129.07 KM





<b>H.M. LNFT Land Registry</b>		TITLE NUMBER	
		<b>L1020-221121</b>	
ADMINISTRATIVE AREA	<b>THE GREAT EMPIRE</b>	ISSUED 22 November 2021 <i>bi.</i>	SCALE <b>1/50000</b>
OWNER ENTITLEMENT	<b>Type W-GE: Share of 0.3% of all BUN sales based on number of NFT Stories minted (rewarded in Credits); Mint 4 NFT Stories</b>		





OFFICIAL PERSPECTIVE SHEET FOR FILING  
Indicate vantage point for each drawing. Copy and mark each sheet required prior to filing.

Guide - Vantage point should be indicated as shown in the diagram:

