

LOOT NFT WORLD



HABN Island

Vault Atoll

Royaume de Satoshi

Kingdom of X by SL

The Great Empire



Isle of Fund



Approved by Registrar of Lands

John Dwyer - Administrator TGE

Territorio LTT ST



HER MAJESTY'S GATED WORLD

As an economic and ruling powerhouse, the Great Empire controls the issuance and trade of BUN, LTT, and USDC reward credits. Decisions by its sitting parliamentarians affect Loot NFT World. Following the last war, border controls are tight and only invitees can enter. Each Sunday, all eyes focus on the Arena and the Crown's Podium, where battle-bidding auctions rage. The battle pit is not for the fainthearted and strategy plays a crucial role in winning.

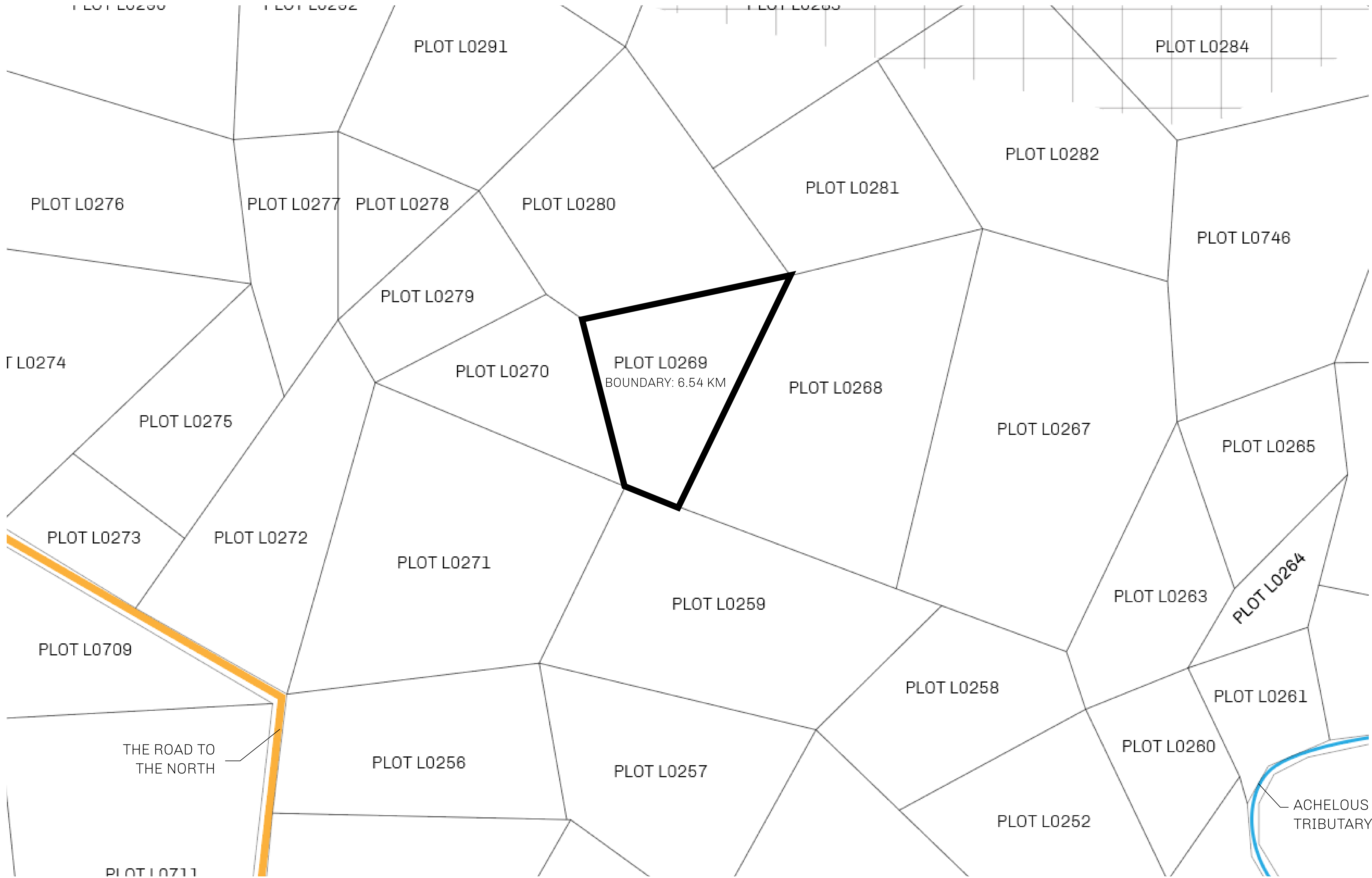
GEOGRAPHY

COASTLINE	462.64 KM (287.47 MILES)
BORDERS	OCEAN, ROYAUME DE SATOSHI, X BY SL & TERRITORIO LTT ST
HIGHEST POINT	MOUNT ARES +8120 M
LOWEST POINT	NFT PORT 0 M
PLOTS	2284
SCALE	1:50000





H.M. LNFT Land Registry		TITLE NUMBER	
		L0269-221121	
ADMINISTRATIVE AREA	THE GREAT EMPIRE	ISSUED 22 November 2021 <i>BJ.</i>	SCALE 1/50000
OWNER ENTITLEMENT	Type W-GE: Share of 0.3% of all BUN sales based on number of NFT Stories minted (rewarded in Credits); Mint 4 NFT Stories		



OFFICIAL PERSPECTIVE SHEET FOR FILING
Indicate vantage point for each drawing. Copy and
mark each sheet required prior to filing.

Guide - Vantage point should be
indicated as shown in the diagram:

