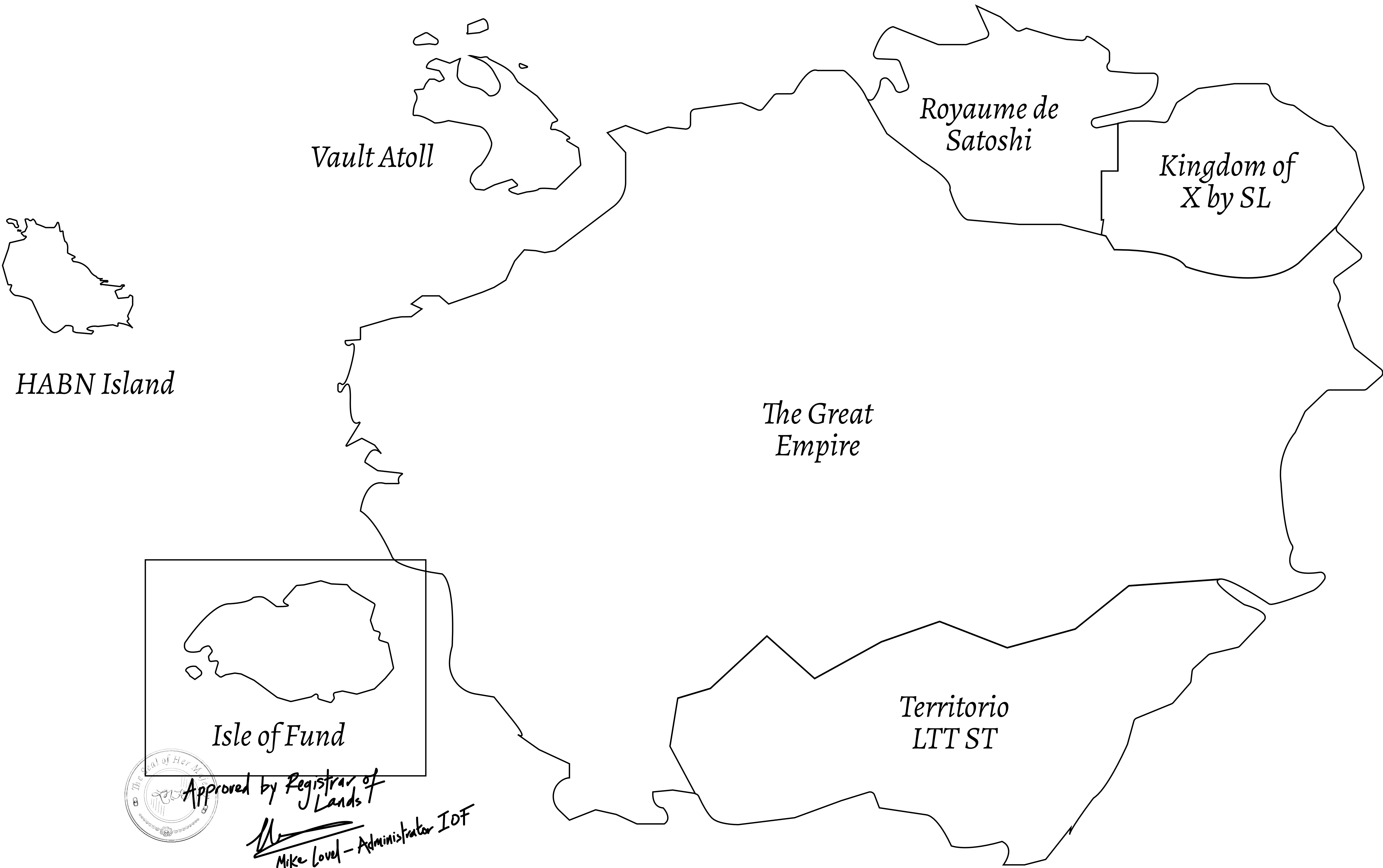


# LOOT NFT WORLD



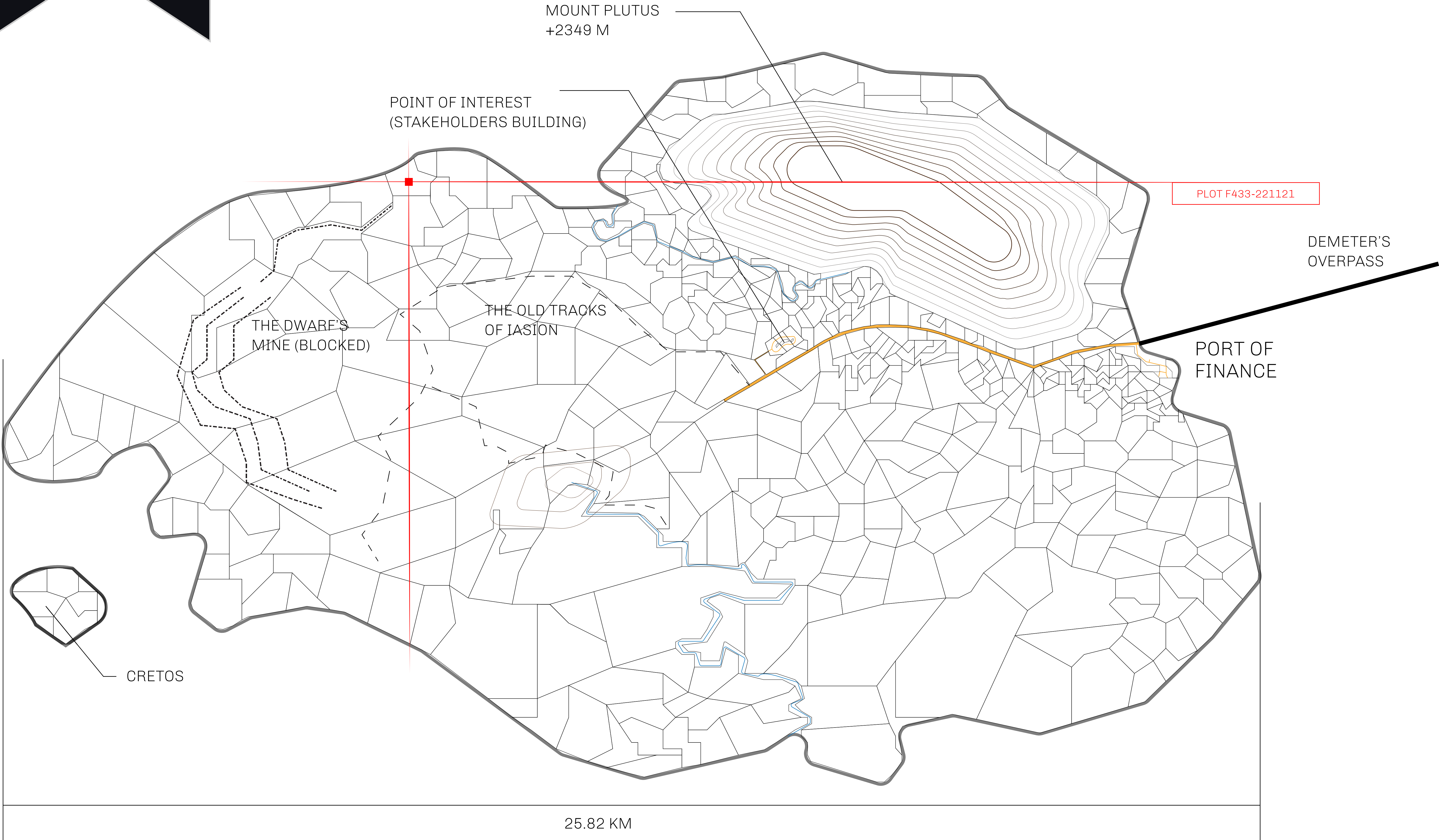
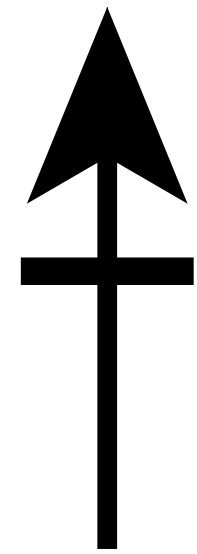


THE FINANCIERS

Often known as the “paperwork” center of Loot NFT World, the Isle of Fund is the destination for landowners to manage their plots. Plots grant rights embodied in revenue-bearing NFTs (or RB-NFTs), such as minting of NFT stories, receiving USDC platform credit rewards from the World’s economic activities, and more. Its people are the leaders in NFT-wrapped instrument experimentations which occurs at the Stakeholder’s Building.

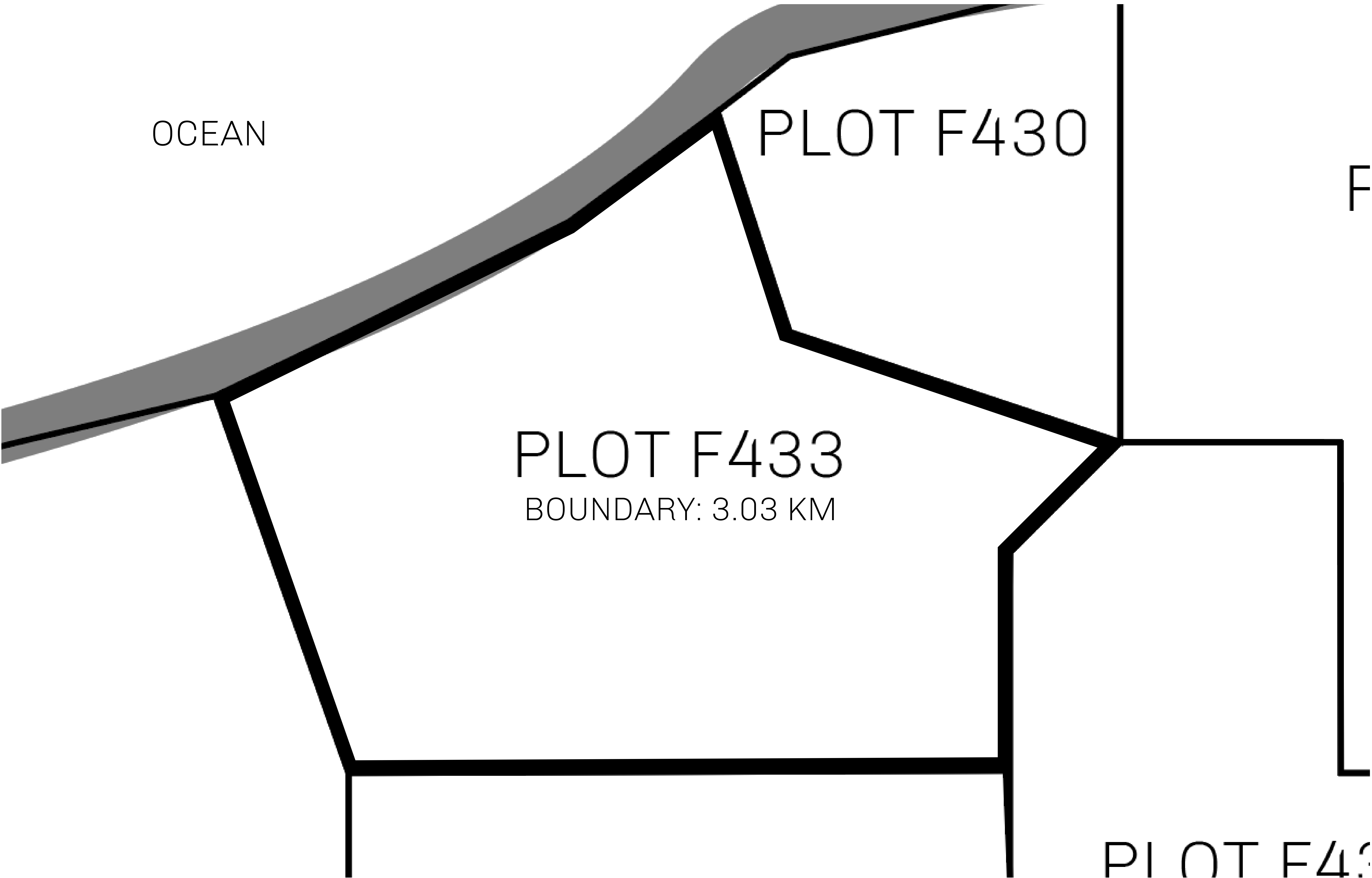
GEOGRAPHY

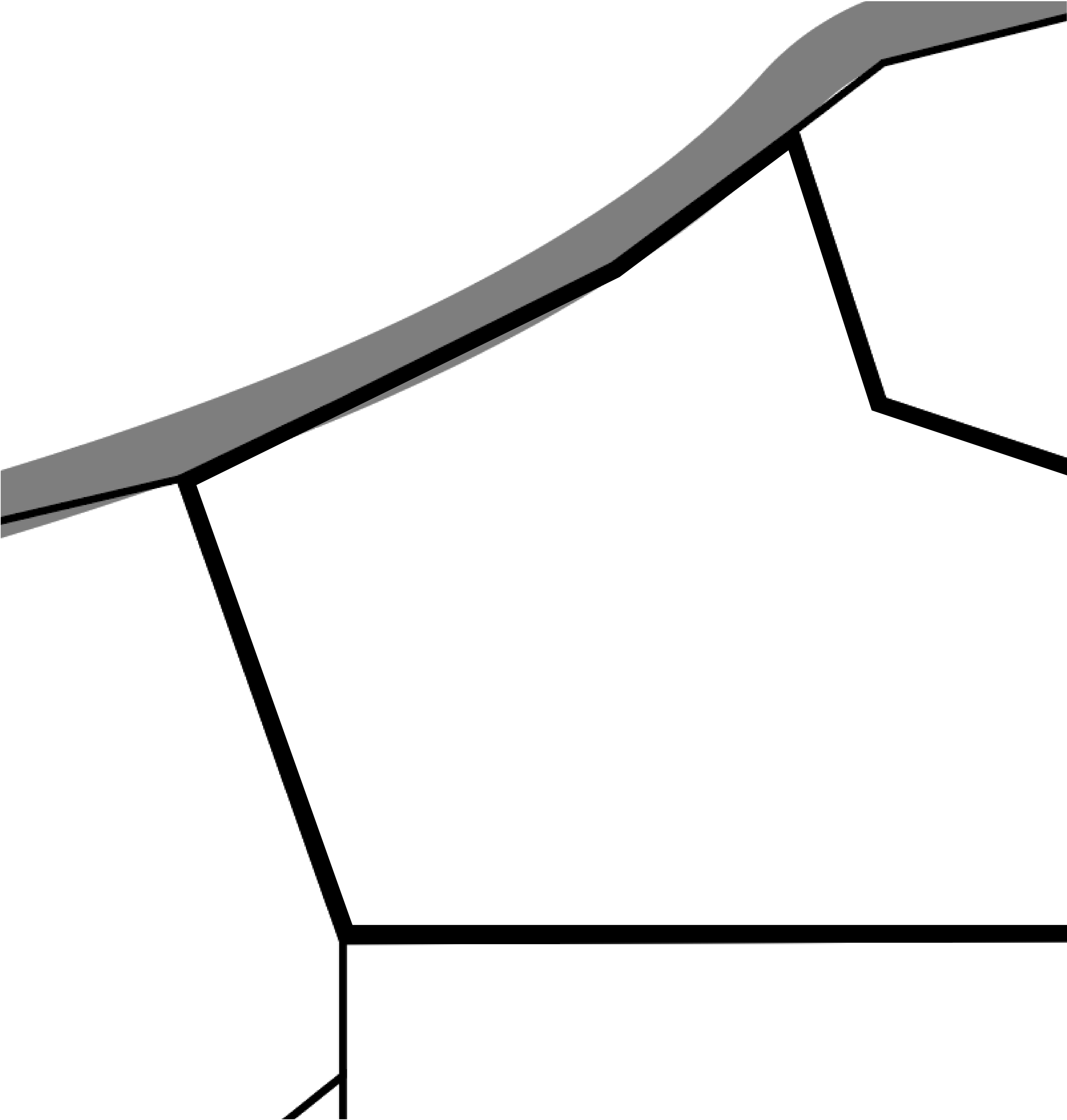
|               |                         |
|---------------|-------------------------|
| COASTLINE     | 73.54 KM (45.70 MILES)  |
| BORDERS       | OCEAN                   |
| HIGHEST POINT | MOUNT PLUTUS +2349 M    |
| LOWEST POINT  | THE DWARF’S MINE -215 M |
| PLOTS         | 490                     |
| SCALE         | 1:50000                 |





|                                |                                                                                                                                   |                                           |                      |
|--------------------------------|-----------------------------------------------------------------------------------------------------------------------------------|-------------------------------------------|----------------------|
| <b>H.M. LNFT Land Registry</b> |                                                                                                                                   | TITLE NUMBER                              |                      |
|                                |                                                                                                                                   | <b>F433-221121</b>                        |                      |
| ADMINISTRATIVE AREA            | <b>ISLE OF FUND</b>                                                                                                               | ISSUED <b>22 November 2021</b> <i>bi.</i> | SCALE <b>1/50000</b> |
| OWNER ENTITLEMENT              | <b>Type W-IOF: Share of 0.1% of all BUN sales based on number of NFT Stories minted (rewarded in Credits); Mint 4 NFT Stories</b> |                                           |                      |





OFFICIAL PERSPECTIVE SHEET FOR FILING  
Indicate vantage point for each drawing. Copy and mark each sheet required prior to filing.

Guide - Vantage point should be indicated as shown in the diagram:

