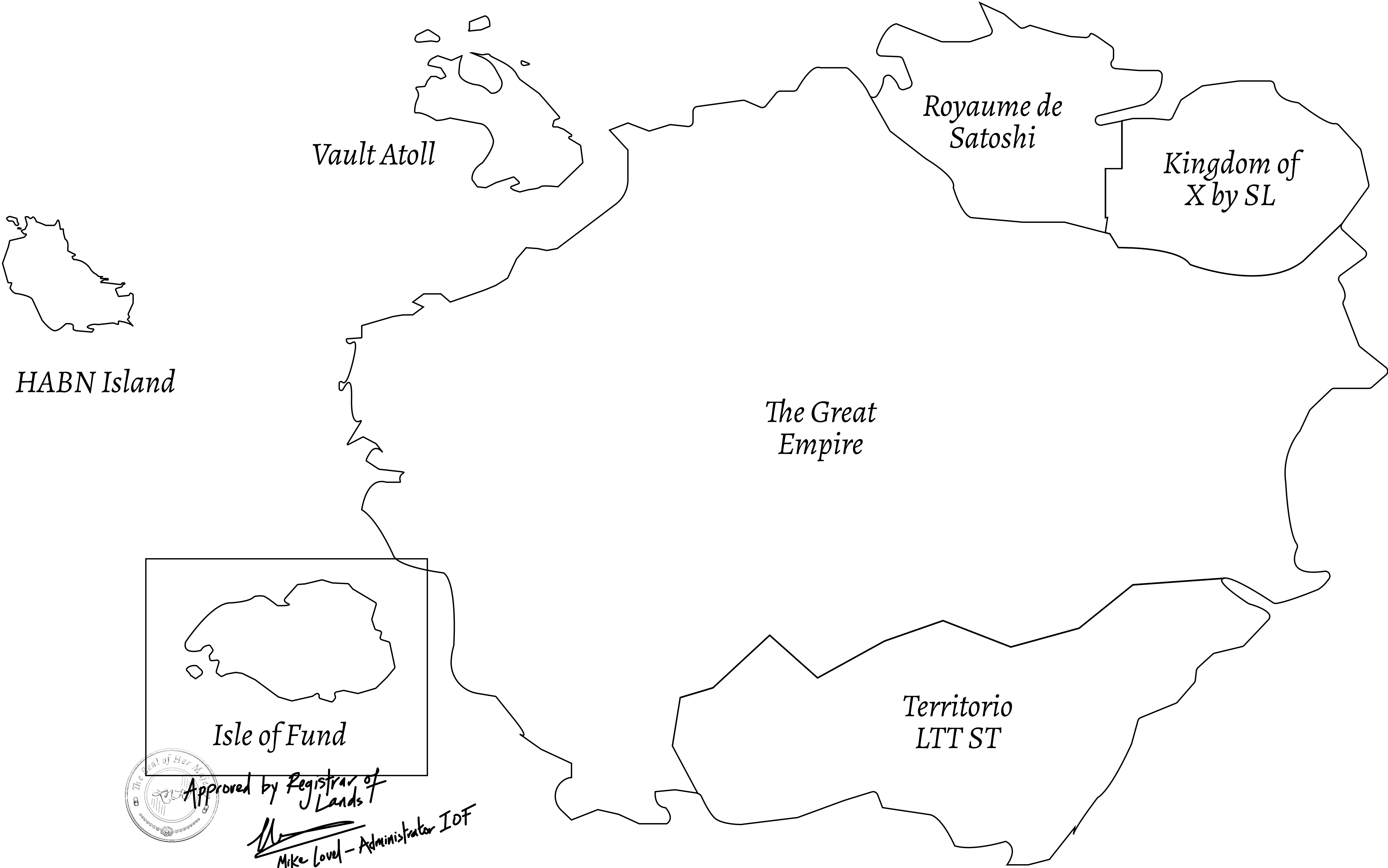


LOOT NFT WORLD



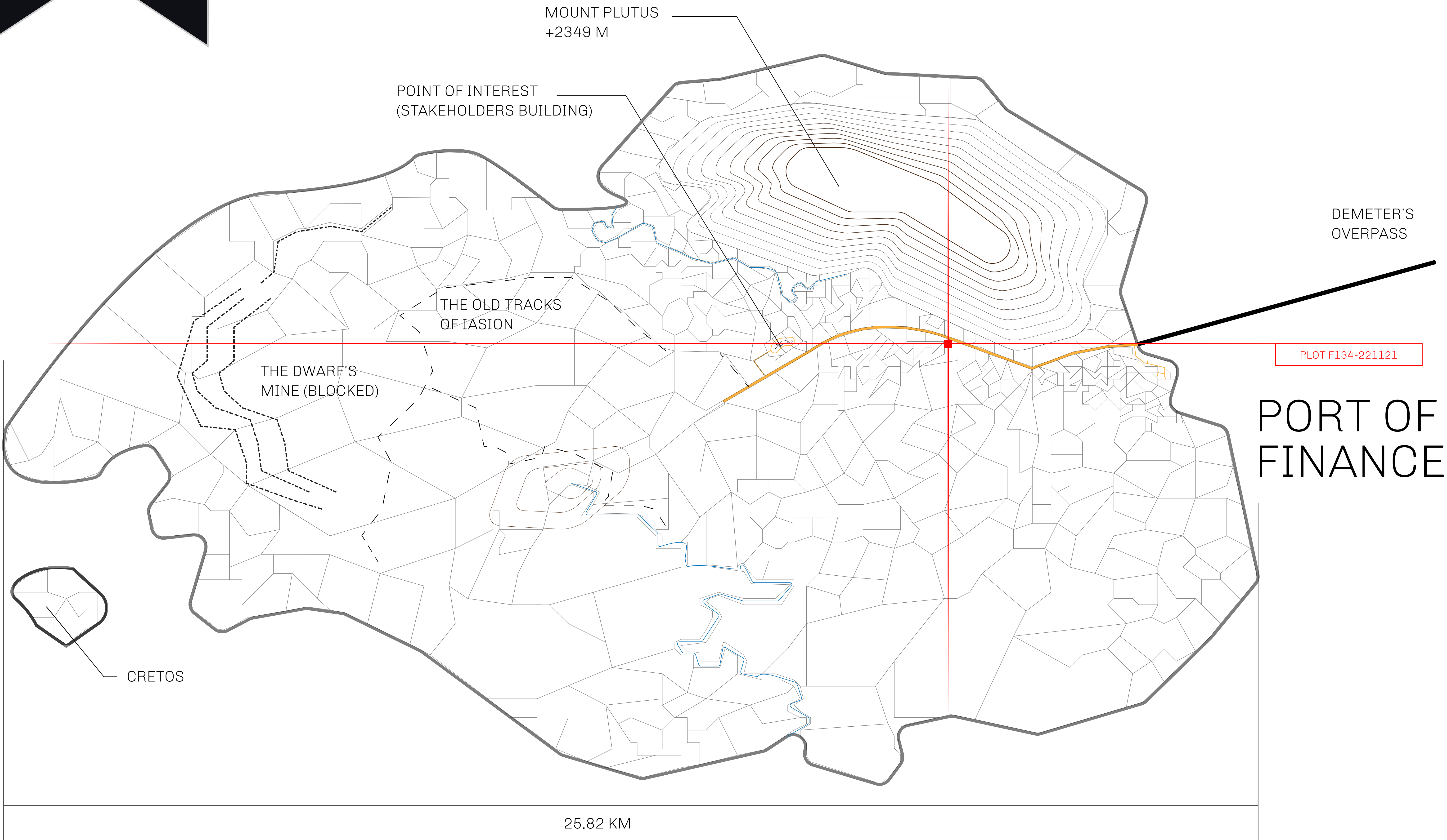
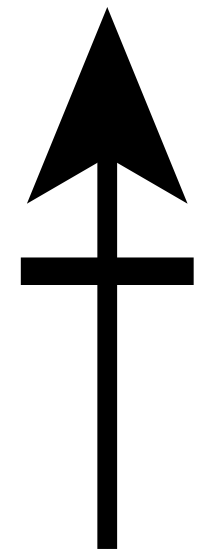


THE FINANCIERS

Often known as the “paperwork” center of Loot NFT World, the Isle of Fund is the destination for landowners to manage their plots. Plots grant rights embodied in revenue-bearing NFTs (or RB-NFTs), such as minting of NFT stories, receiving USDC platform credit rewards from the World’s economic activities, and more. Its people are the leaders in NFT-wrapped instrument experimentations which occurs at the Stakeholder’s Building.

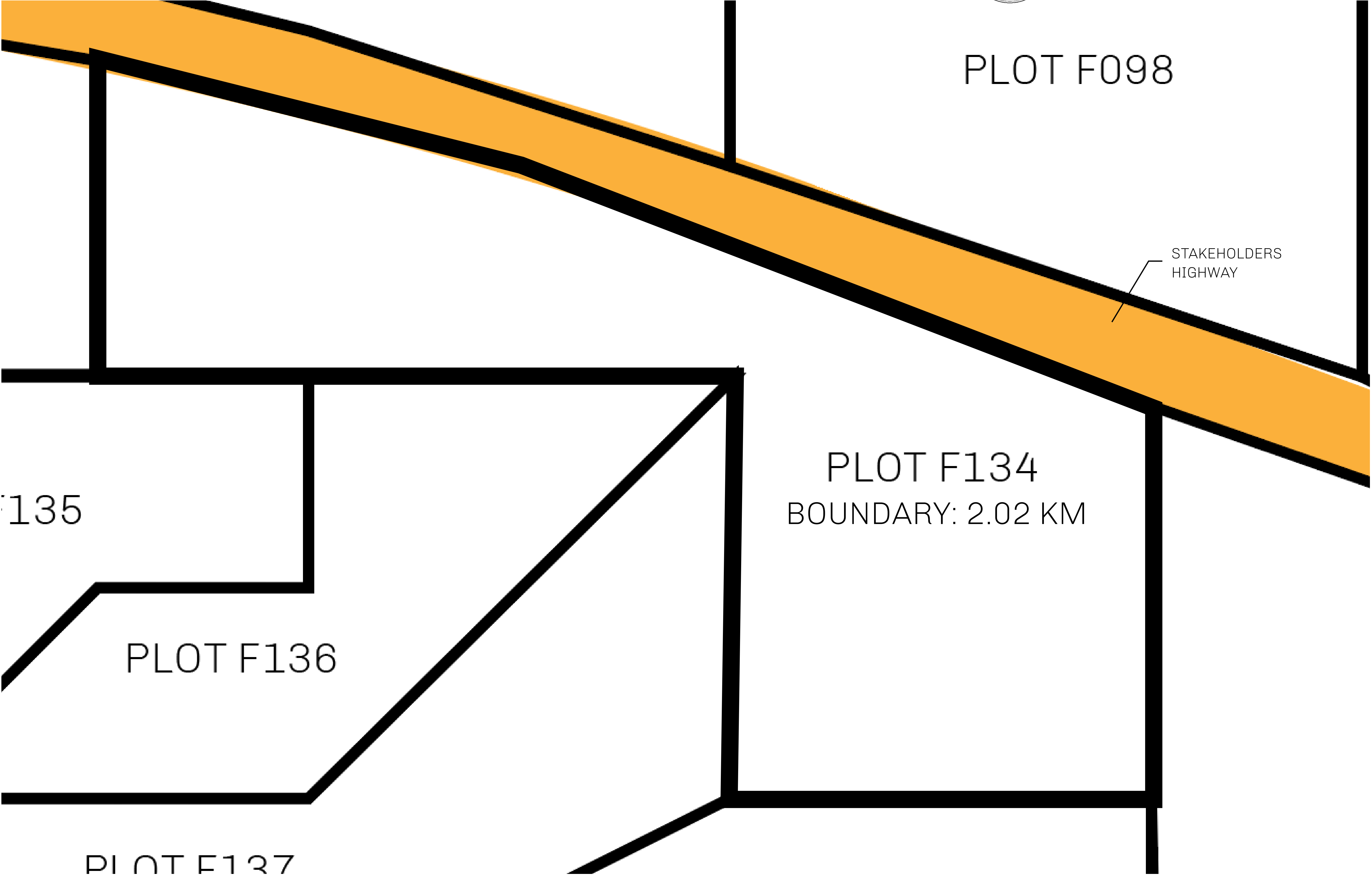
GEOGRAPHY

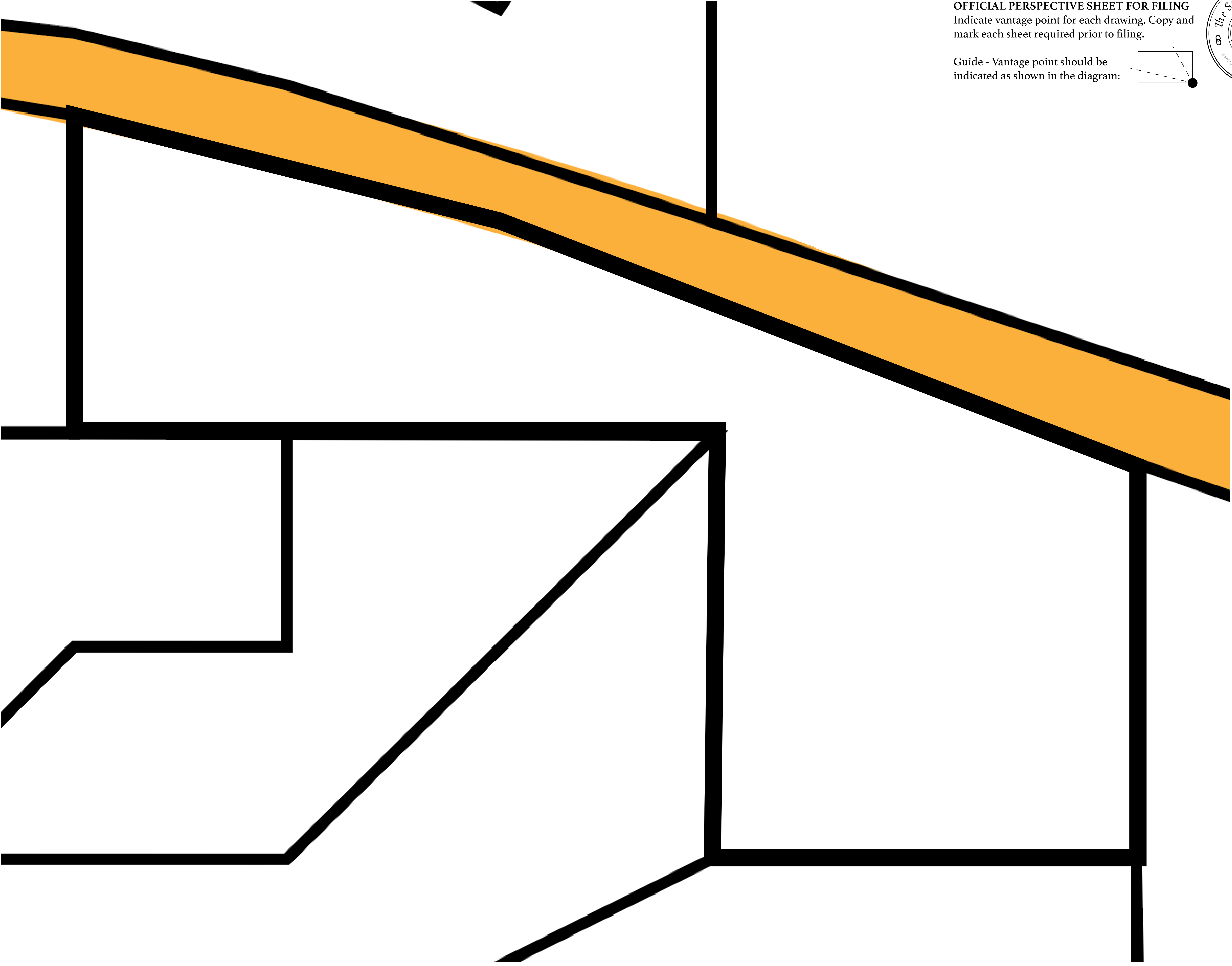
COASTLINE	73.54 KM (45.70 MILES)
BORDERS	OCEAN
HIGHEST POINT	MOUNT PLUTUS +2349 M
LOWEST POINT	THE DWARF’S MINE -215 M
PLOTS	490
SCALE	1:50000





H.M. LNFT Land Registry		TITLE NUMBER	
		F134-221121	
ADMINISTRATIVE AREA	ISLE OF FUND	ISSUED 22 November 2021 <i>bi.</i>	SCALE 1/50000
OWNER ENTITLEMENT	Type W-IOF: Share of 0.1% of all BUN sales based on number of NFT Stories minted (rewarded in Credits); Mint 4 NFT Stories		





OFFICIAL PERSPECTIVE SHEET FOR FILING
Indicate vantage point for each drawing. Copy and mark each sheet required prior to filing.

Guide - Vantage point should be indicated as shown in the diagram:

