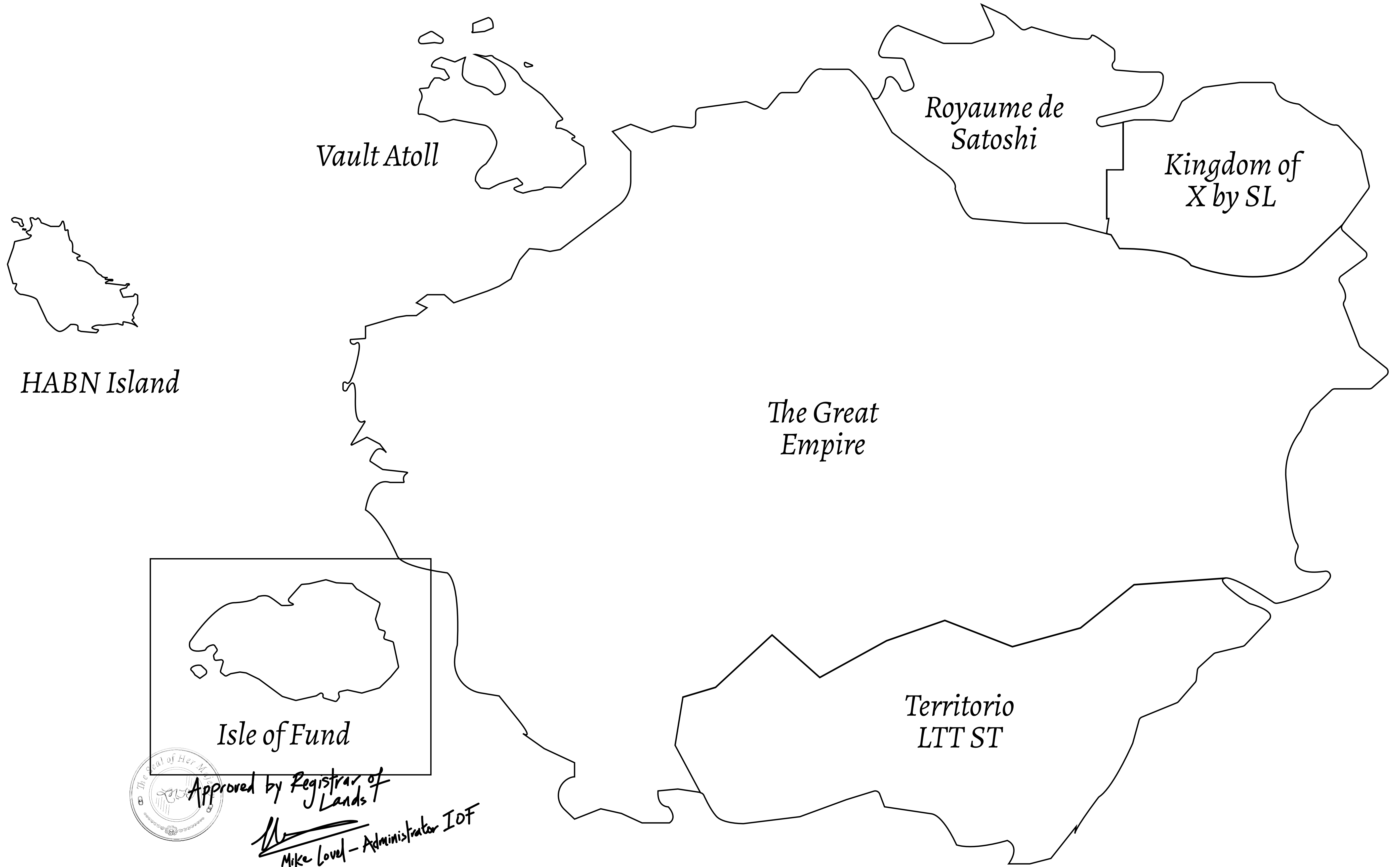


LOOT NFT WORLD



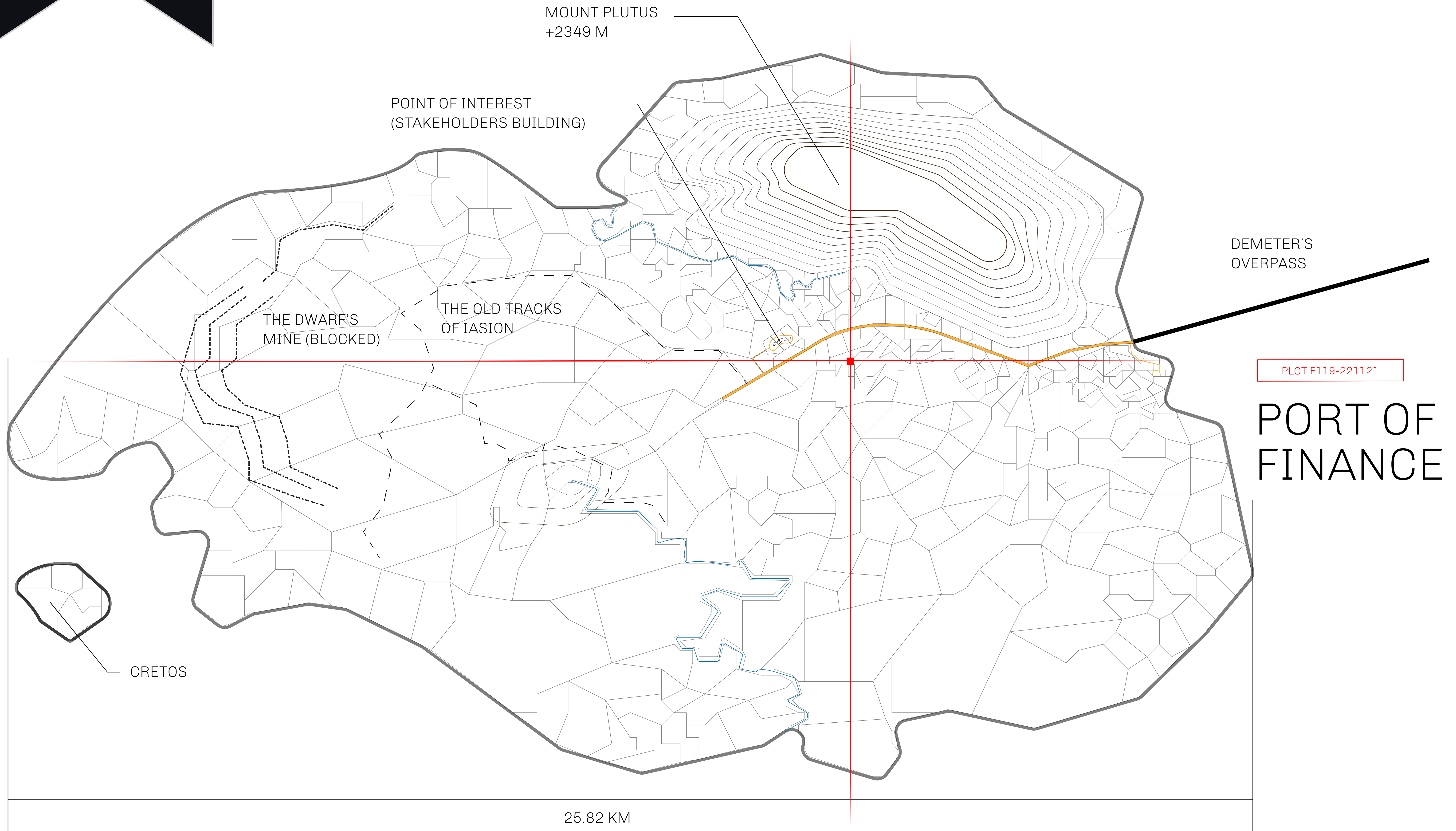
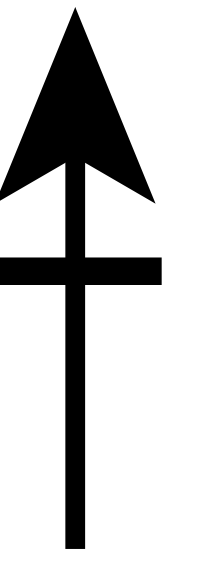


THE FINANCIERS

Often known as the "paperwork" center of Loot NFT World, the Isle of Fund is the destination for landowners to manage their plots. Plots grant rights embodied in revenue-bearing NFTs (or RB-NFTs), such as minting of NFT stories, receiving USDC platform credit rewards from the World's economic activities, and more. Its people are the leaders in NFT-wrapped instrument experimentations which occurs at the Stakeholder's Building.

GEOGRAPHY

COASTLINE	73.54 KM (45.70 MILES)
BORDERS	OCEAN
HIGHEST POINT	MOUNT PLUTUS +2349 M
LOWEST POINT	THE DWARF'S MINE -215 M
PLOTS	490
SCALE	1:50000





H.M. LNFT Land Registry

TITLE NUMBER

F119-221121

ADMINISTRATIVE AREA

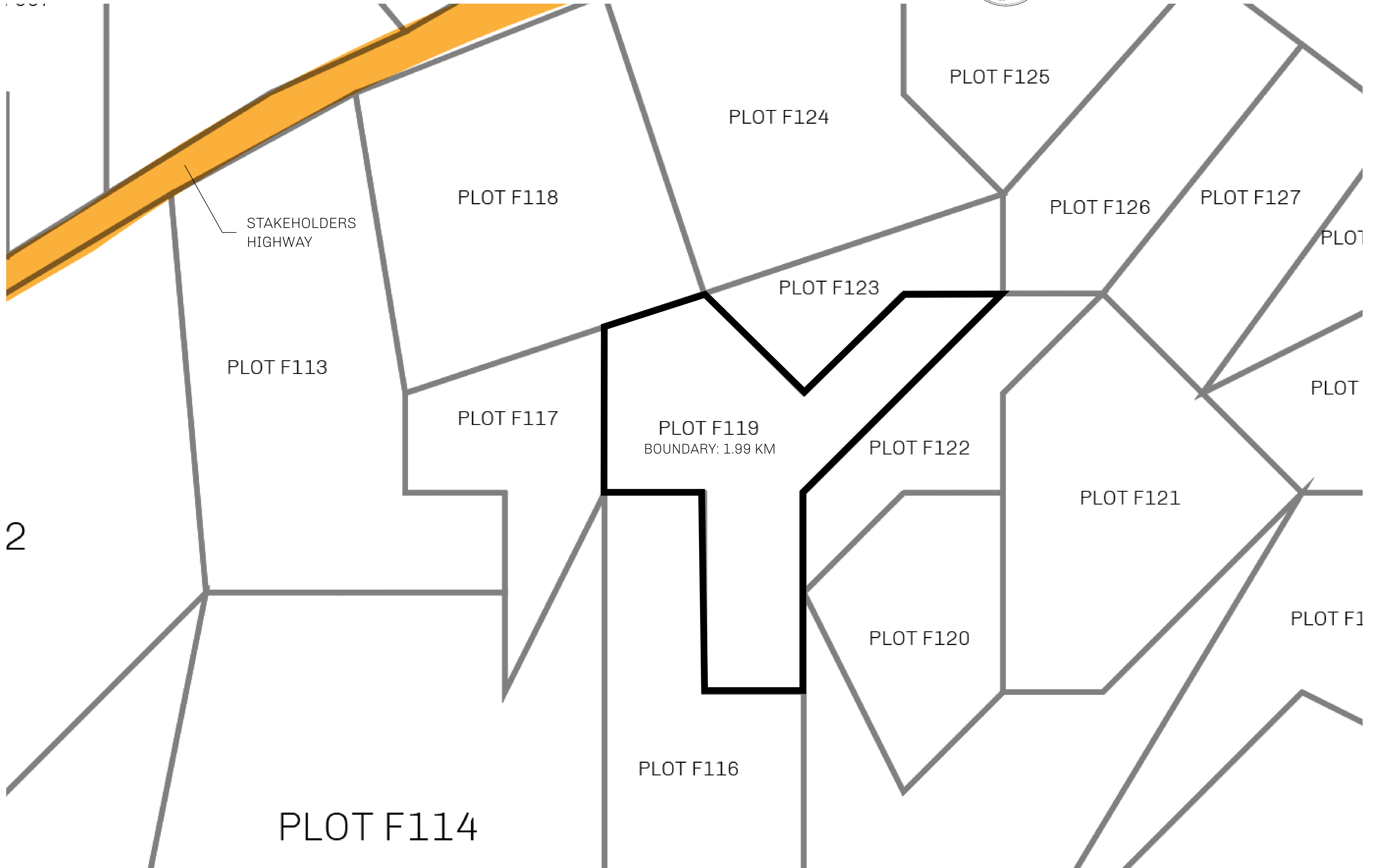
ISLE OF FUND

ISSUED **22 November 2021**

SCALE **1/50000**

OWNER ENTITLEMENT

Type W-IOF: Share of 0.1% of all BUN sales based on number of NFT Stories minted (rewarded in Credits); Mint 4 NFT Stories



OFFICIAL PERSPECTIVE SHEET FOR FILING
Indicate vantage point for each drawing. Copy and
mark each sheet required prior to filing.

Guide - Vantage point should be
indicated as shown in the diagram:

